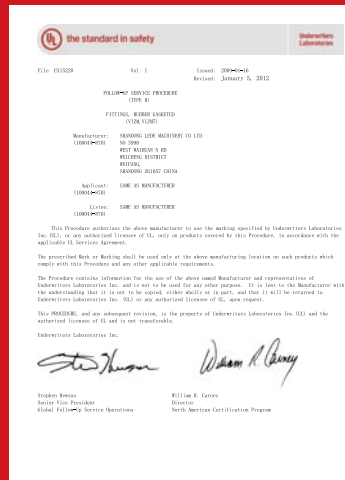
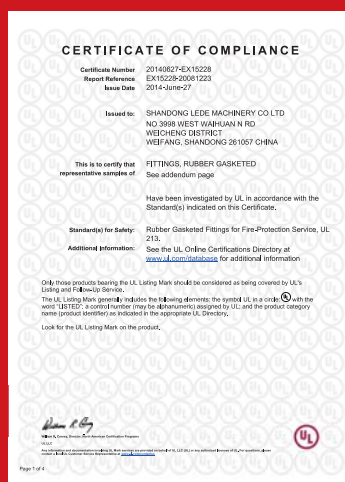


LEDE[®]

SHANDONG LEDE MACHINERY CO.,LTD.



INTERNATIONAL APPROVAL



- MOST RELIABLE SUPPLIER -



Shandong Lede Machinery Co.,Ltd. was founded in 2003,which owns 600 staffs and mainly engages in the production of Grooved Fittings, the annual production capacity can reach 30,000 tons. Now LEDE has been the leading manufacturer on grooved fittings in the world.

LEDE is committed to supplying the high price performance ratio products, for grooved fittings, LEDE has been approved by FM and UL, and in 2015, LEDE will get LPCB and VDS together too.

LEDE owns three big factories with advanced electric furnaces and automatic lines, the product is machined with CNC and the surface is coated with red epoxy powder, electrophoretic paint, orange paint or galvanization. The mold center keeps developing new products which can satisfy diverse requirements from different customers.

LEDE products have been sold to most of the countries and areas in the world like America, Canada, Europe, Russia, Australia, Middle East, Asia, Africa, etc., and LEDE is becoming one famous and reliable brand for the customers.

LEDE products are wildly used in various fields as follows:

1. Automatic sprinkler system for Fire Fighting Protection on Commercial, Civil and Municipal constructions like water supplying, gas supplying, heat supplying, drainage, air conditioning, etc.
2. Industrial pipeline system on shipping, mine, oil field, textile, power plant, paper making, beverage and steel making, etc.
3. Pipeline system on subway station, railway station , airport, seaport, bridge, channel, etc.



**Angle-pad Coupling
GKS**

P10



**HDPE Coupling
HDPE**

P10



**Rigid Coupling
XGQT1**

P11



**Flexible Coupling
XGQT2**

P12



**Flexible Coupling (Heavy-duty)
M2**

P13



**Rigid Coupling (Heavy-duty)
M1**

P13



**Reducing Flexible Coupling
XGQT3**

P14



**90° Elbow
XGQT01**

P15



**Grooved 45° Elbow
XGQT011**

P16



**Grooved 22.5° Elbow
XGQT012**

P17



**Grooved 11.25° Elbow
XGQT013**

P17



**Grooved Tee
XGQT03**

P18



**Grooved Reducing Tee
XGQT03**

P19



**Bullhead Tee
XGQT03**

P21



**Threaded Reducing Tee
XGQT03S**

P22



**Grooved Cross
XGQT05**

P24



**Grooved Reducing Cross
XGQT05**

P25



**Threaded Reducing Cross
XGQT05S**

P27



**Grooved Mechanical Tee
XGQT04G**

P29



**Threaded Mechanical Tee
XGQT04**

P31



Grooved Mechanical Cross
XGQT04G

P34



Threaded Mechanical Cross
XGQT04

P35



90° Reducing Elbow
XGQT014

P36



U-Bolt Mechanical Tee
041

P37



Small Threaded Mechanical Tee
L922

P37



Grooved Reducer
XGQT07

P38



Threaded Reducer
XGQT07S

P40



Grooved Eccentric Reducer
XGQT072

P44



Grooved Flange PN16
XGQT09

P42



Grooved Flange ANSI125/150
L991

P42



Flange Adaptor PN16
XGQT08

P43



Flange Adaptor ANSI125/150
L981

P43



Grooved Cap
XGQT06

P44



Cap with Eccentric hole
XGQT061

P45

TEST EQUIPMENT



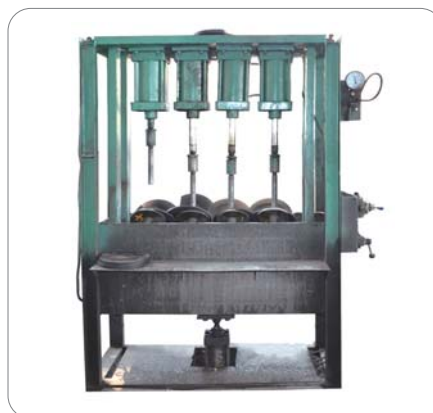
Salt Spray Test



Gasket Test



Pressure Test



Air Test



Spectrom For Material



Strength Test

PRODUCTION EQUIPMENT



Casting Line



Electrophoretic Treatment



Machining Plant



Mold Center

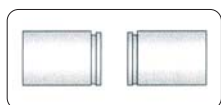
TEST EQUIPMENT



Coating Line



Packing Line



Grooved Pipe



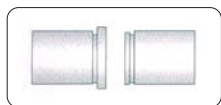
Gasket



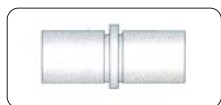
Lubricate the gasket



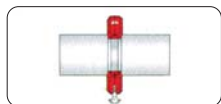
Slide another pipe end



Close another pipe end



Slide another pipe end into the gasket

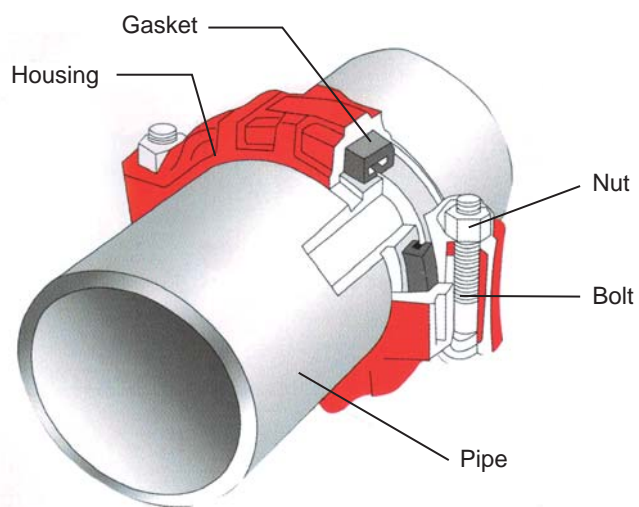


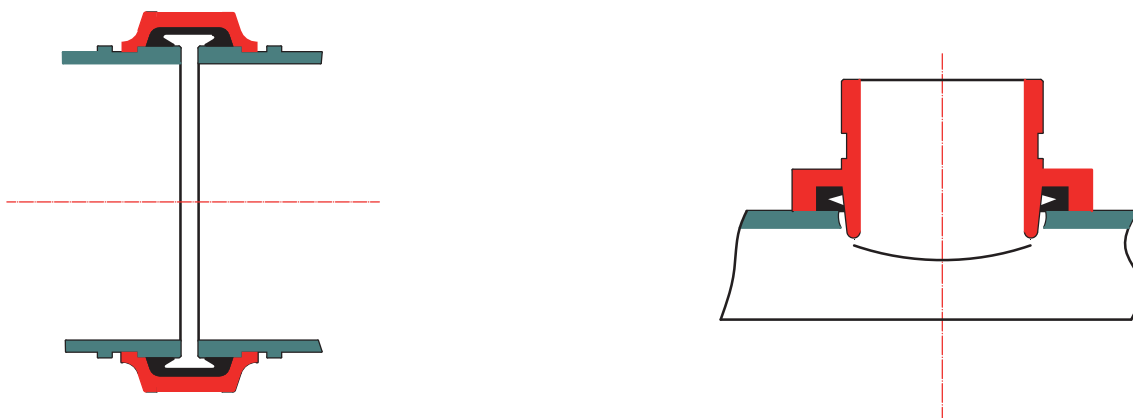
Place the housings over the gasket



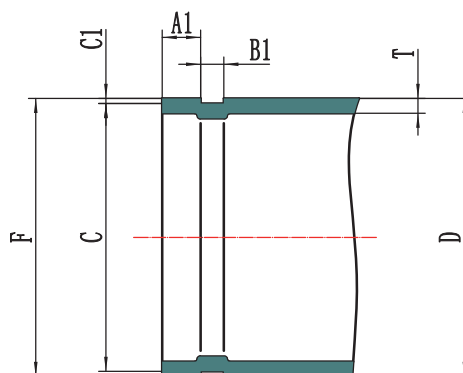
Tighten the bolts and nuts

Pipe
Preparation





Normal Diameter	O.D/in	O.D/mm	A1	B1	C1	C (mm)		T	F
mm	mm	mm	mm	mm	mm	Basic Size	Tolerance	mm	mm
DN25	1"	33.7	15.9	7.2	1.6	30.2	-0.38	1.8	34.5
DN32	1 1/4"	42.4	15.9	7.2	1.6	39	-0.38	1.8	43.3
DN40	1 1/2"	48.3	15.9	7.2	1.6	45.1	-0.38	1.8	49.4
DN50	2"	60.3	15.9	8.8	1.6	57.2	-0.38	1.8	62.2
DN65	2 1/2"	73	15.9	8.8	2	69.1	-0.46	2.3	75.2
DN65	2 1/2"	76.1	15.9	8.8	2	72.3	-0.46	2.3	77.7
DN80	3"	88.9	15.9	8.8	2	84.9	-0.46	2.3	90.6
DN100	4"	108	15.9	8.8	2.1	103.7	-0.51	2.3	109.7
DN100	4"	114.3	15.9	8.8	2.1	110.1	-0.51	2.3	116.2
DN125	5"	133	15.9	8.8	2.1	129.1	-0.51	2.9	134.9
DN125	5"	139.7	15.9	8.8	2.1	135.5	-0.51	2.9	141.7
DN125	5"	141.3	15.9	8.8	2.1	137	-0.56	2.9	143.5
DN150	6"	159	15.9	8.8	2.2	154.5	-0.56	2.9	161
DN150	6"	165.1	15.9	8.8	2.2	160.9	-0.56	2.9	167.1
DN150	6"	168.3	15.9	8.8	2.2	164	-0.56	2.9	170.7
DN200	8"	219.1	19.1	11.9	2.4	214.4	-0.64	2.9	221.5
DN250	10"	273	19.1	11.9	2.4	268.3	-0.69	3.6	275.4
DN300	12"	323.9	19.1	11.9	2.8	318.3	-0.76	4	326.2
DN350	14"	355.6	23.8	11.9	2.8	350	-0.7	4.5	359



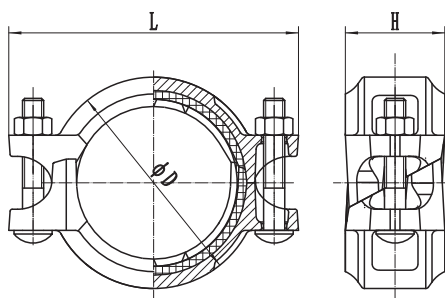
Extra degrees of deflection angular is allowed for flexible coupling, but when the flexible coupling is assembled, the value must be no more than the maximum degree.

Norminal Diameter	O.D/in	O.D/mm	Max Deflection Angular
DN25	1"	33.7	2.3
DN32	1 1/4"	42.4	2.3
DN40	1 1/2"	48.3	2.3
DN50	2"	60.3	2.3
DN65	2 1/2"	73	1.9
DN65	2 1/2"	76.1	1.9
DN80	3"	88.9	1.6
DN100	4"	108	1.7
DN100	4"	114.3	1.6
DN125	5"	133	1.4
DN125	5"	139.7	1.3
DN125	5"	141.3	1.3
DN150	6"	159	1.2
DN150	6"	165.1	1.1
DN150	6"	168.3	1.1
DN200	8"	219.1	0.8
DN250	10"	273	0.7
DN300	12"	323.9	0.6
DN350	14"	355.6	0.5

To ensure valid seal property, the torque of the bolts must be within the scope of the demands, Too big torque will damage the bolts and housing, too small torque will cause leakage.

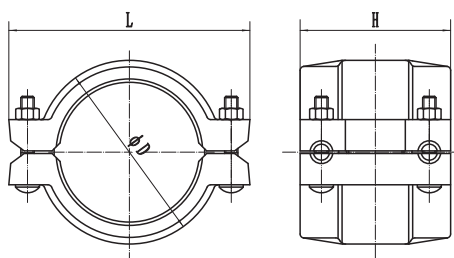
Bolt	Torque(N*M)
M8(5/16)	25-30
M10(3/8)	60-70
M12(1/2)	90-100
M14(9/16)	135-150
M16(5/8)	200-230
M20(3/4)	270-300
M22(7/8)	270-300

Angle-pad Coupling GKS



Nominal Size mm/in	Pipe O.D mm/in	Dimensions			Bolt	Working pressure Psi
		ΦD	L	H	inch/mm	
		mm	mm	mm		
25	33.7	56	96	47	3/8×2-3/8 (M10×60)	300
1	1.327					
32	42.4					
1¼	1.669	64	106	47		
40	48.3					
1½	1.9	69	113	47		
50	60.3					
2	2.375	88	122	47		
65	73					
2½	2.875	100	137	47		
65	76.1					
2½	3	100	137	47		
80	88.9					
3	3.5	116	154	47		
100	114.3					
4	4.5	142	188	52		
125	139.7					
5	5.5	170	219	52		
125	141.3					
5	5.563	170	219	52		
150	159					
6	6.25	196	244	52		
150	165.1					
6	6.5	197	244	52		
150	168.3					
6	6.625	199	246	52		
200	219.1					
8	8.625	262	322	66		
250	273					
10	10.75	325	400	66		
300	323.9					
12	12.75	376	468	67		

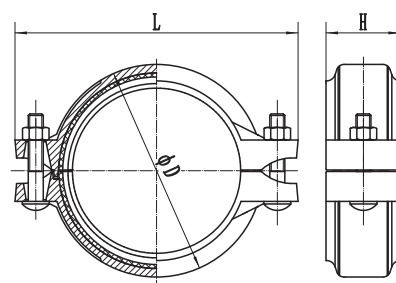
HDPE Coupling HDPE



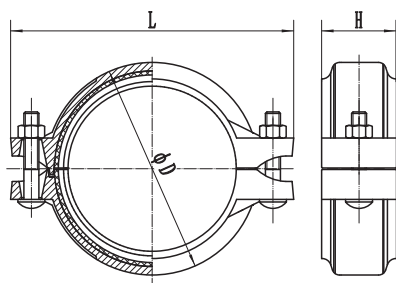
Nominal Size mm/in	Pipe O.D mm/in	Dimensions			Bolt/Nut
		ΦD	L	H	Size (mm)
		mm	mm	mm	
50	63	85	128	105	3/8×2-1/8 (M10×55)
2	2.5				
80	90	110	169	105	1/2×3 (M12×75)
3	3.5				
100	110	138	181	113	1/2×3 (M12×75)
4	4.3				
150	160	190	261	147	5/8×3-1/2 (M16×90)
6	6.3				
200	200	233	319	154	5/8×3-1/2 (M16×90)
8	7.9				
250	250	287	351	136	5/8×4-3/4 (M16×120)
10	9.8				
300	315	351	442	136	3/4×4-3/4 (M20×120)
12	12.4				

Nominal Size mm/in	Pipe O.D mm/in	Dimensions			Bolt	Working pressure Psi
		ΦD	L	H	inch/mm	
		mm	mm	mm		
25	33.7	55	97	45	3/8×1-1/2 (M10×40)	300
1	1.327					
32	42.4	63.5	107.5	45	3/8×1-3/4 (M10×45)	
1¼	1.669					
40	48.3	69	114	45		
1½	1.9					
50	57	83.6	124	46	3/8×2-1/8 (M10×55)	
2	2.244					
50	60.3	83.6	124	46		
2	2.375					
65	73	98	137	46		
2½	2.875					
65	76.1	98	139	46		
2½	3					
80	88.9	114	156	46		
3	3.5					
100	108	138	186	50	1/2×2-5/8 (M12×65)	
4	4.25					
100	114.3	142	189	50		
4	4.5					
125	133	164	213	50		
5	5.25					
125	139.7	170	222	50		
5	5.5					
125	141.3	170	218	50		
5	5.563					
150	159	192	244	50		
6	6.25					
150	165.1	196	244	50		
6	6.5					
150	168.3	198	251	50		
6	6.625					
200	216.3	254	340	62	3/4×3-1/2 (M20×90)	
8	8.515					
200	219.1	256	316	60	5/8×3-1/8 (M16×80)	
8	8.625					
250	267.4	313	400	64	3/4×3-1/2 (M20×90)	
10	10.527					
250	273	319	393	64	3/4×3-1/2 (M20×90)	
10	10.75					
300	318.5	368	464	64	7/8×4-1/3 (M22×110)	
12	12.539					
300	323.9	374	453	65	3/4×4-1/3 (M20×110)	
12	12.75					

Rigid Coupling XGQT1



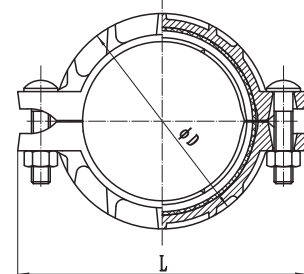
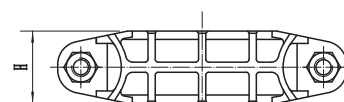
Flexible Coupling XGQT2



Nominal Size mm/in	Pipe O.D mm/in	Dimensions			Bolt	Working pressure Psi
		ΦD	L	H	inch/mm	
		mm	mm	mm		
25	33.7	55	97	45	3/8×1-1/2 (M10×40)	300
1	1.327					
32	42.4					
1¼	1.669	63.5	107.5	45	3/8×1-3/4 (M10×45)	
40	48.3					
1½	1.9					
50	57	83.6	124	46	3/8×2-1/8 (M10×55)	
2	2.244					
50	60.3					
2	2.375	83.6	124	46		
65	73					
2½	2.875					
65	76.1	98	137	46		
2½	3					
80	88.9					
3	3.5	114	156	46		
100	108					
4	4.25					
100	114.3	138	186	50	1/2×2-5/8 (M12×65)	
4	4.5					
125	133					
5	5.25	164	213	50		
125	139.7					
5	5.5					
125	141.3	170	222	50		
5	5.563					
150	159					
6	6.25	192	244	50		
150	165.1					
6	6.5					
150	168.3	196	244	50		
6	6.625					
200	216.3					
8	8.515	254	340	62		
200	219.1					
8	8.625					
250	267.4	256	316	60	5/8×3-1/8 (M16×80)	
10	10.527					
250	273.0					
10	10.75	313	400	64	3/4×3-1/2 (M20×90)	
300	318.5					
12	12.539					
300	323.9	319	393	64	3/4×3-1/2 (M20×90)	
12	12.75					
350	355.6					
14	14	368	464	64	7/8×4-1/3 (M22×110)	
350	377					
14	14.843					
400	426	374	453	65	3/4×4-1/3 (M20×110)	
16	16.771					
		410	510	75	7/8×4-1/3 (M22×110)	
		428	478.4	75	7/8×3-1/2 (M22×90)	
		478	528.6	75		

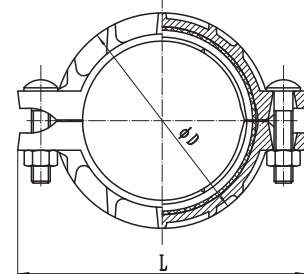
Nominal Size mm/in	Pipe O.D mm/in	Dimensions			Bolt	Working pressure Psi	
		ΦD	L	H	inch/mm		
		mm	mm	mm			
32	42.4	63.5	107.5	45	3/8×2-1/8 (M10×45)	500	
1¼	1.669						
40	48.3						
1½	1.9	69	114	45			
65	76.1	101.2	144	46	1/2×2-3/8 (M12×60)		
2½	3						
80	88.9						
3	3.5	117.4	157	46			
100	108	144.4	195	50	1/2×2-3/4 (M12×70)		
4	4.25						
100	114.3						
4	4.5	149.2	200	50			
125	133	172	231	50	5/8×3-1/8 (M16×80)		
5	5.25						
125	139.7						
5	5.5	180	235	50			
125	141.3	180.4	235	50			
5	5.563						
150	159						
6	6.25	203	268	50			
150	165.1	207	273	50			
6	6.5						
150	168.3						
6	6.625	209.4	272	50			
200	219.1	276	347	58			3/4×4-1/3 (M20×110)
8	8.625						

Flexible Coupling (Heavy-duty) M2

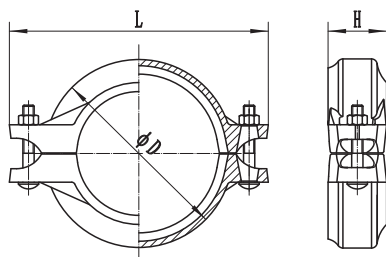


Nominal Size mm/in	Pipe O.D mm/in	Dimensions			Bolt	Working pressure Psi	
		ΦD	L	H	inch/mm		
		mm	mm	mm			
65	76.1	101.2	144	46	1/2×2-3/8 (M12×60)	500	
2½	3						
80	88.9	117.4	157	46			
3	3.5						
100	108	144.4	195	50	1/2×2-3/4 (M12×70)		
4	4.25						
100	114.3	149.2	200	50			
4	4.5						
125	133	172	231	50	5/8×3-1/8 (M16×80)		
5	5.25						
125	139.7	180	235	50			
5	5.5						
125	141.3	180.4	235	50			
5	5.563						
150	159	203	268	50			
6	6.25						
150	165.1	207	273	50			
6	6.5						
150	168.3	209.4	272	50			
6	6.625						
200	219.1	276	347	58			3/4×4-1/3 (M20×110)
8	8.625						

Rigid Coupling (Heavy-duty) M1

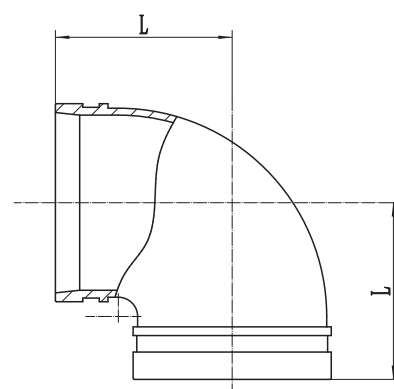


Reducing Flexible Coupling XGQT3

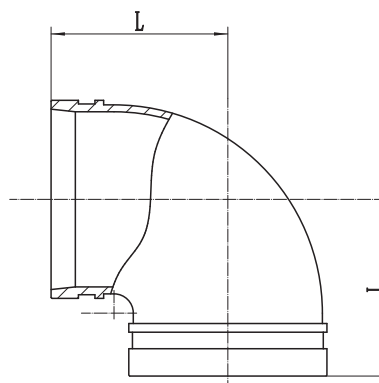


Nominal Size mm/in	Pipe O.D mm/in	Dimensions			Bolt	Working pressure Psi
		ΦD mm	L mm	H mm	inch/mm	
50×40	60.3×48.3	82	130	46	3/8×2-1/8 (M10×55)	300
2×1½	2.375×1.9					
65×25	73×33.7	97	151	46		
2½×1	2.875×1.327					
65×32	73×42.4	97	151	46		
2½×1¼	2.875×1.669					
65×40	73×48.3	97	151	46		
2½×1½	2.875×1.9					
65×50	73×60.3	97	151	46		
2½×2	2.875×2.375					
65×50	76.1×60.3	107	151	46		
2½×2	3×2.375					
80×40	88.9×48.3	112	166.6	46		
3×1½	3.5×1.9					
80×50	88.9×60.3	123.6	166.6	46		
3×2	3.5×2.375					
80×65	88.9×73.0	123.6	166.6	46		
3×2½	3.5×2.875					
80×65	88.9×76.1	123.6	166.6	46		
3×2½	3.5×3					
100×50	114.3×60.3	151.2	200	50		
4×2	4.5×2.375					
100×65	114.3×73.0	151.2	200	50		
4×2½	4.5×2.875					
100×65	114.3×76.1	151.2	200	50		
4×2½	4.5×3.0					
100×80	114.3×88.9	151.2	200	50		
4×3	4.5×3.5					
125×100	141.3×114.3	167	230	52		
5×4	5.563×4.5					
150×80	165.1×88.9	197	275	52		
6×3	6.5×3.5					
150×100	165.1×114.3	197	275	52		
6×4	6.5×4.5					
150×65	168.3×73	199.4	275	52		
6×2½	6.525×2.875					
150×80	168.3×88.9	199.4	275	52		
6×3	6.525×3.5					
150×100	168.3×114.3	199.4	275	52		
6×4	6.525×4.5					
150×100	168.3×141.3	199.4	275	52		
6×5	6.625×5.563					
200×150	219.1×168.3	258	336	58		
8×6	8.625×6.525					

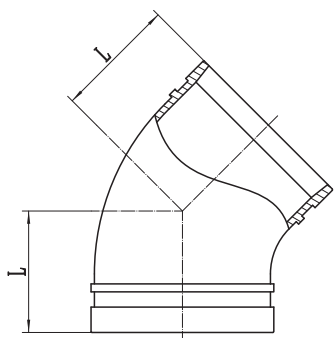
Nominal Size mm/in	Pipe O.D mm/in	Dimensions	Working Pressure (psi)
		L (mm)	
50	60.3	70	300
2	2.375		
65	73	76	
2½	2.875		
65	76.1	76	
2½	3		
80	88.9	85	
3	3.5		
100	108	102	
4	4.25		
100	114.3	102	
4	4.5		
125	133	121	
5	5.25		
125	139.7	121	
5	5.5		
125	141.3	121	
5	5.563		
150	159	130	
6	6.25		
150	165.1	130	
6	6.5		
150	168.3	140	
6	6.625		
200	219.1	175	
8	8.625		
250	273	215	
10	10.75		
300	323.9	220	
12	12.75		

Grooved 90° Elbow Short
XGQT01

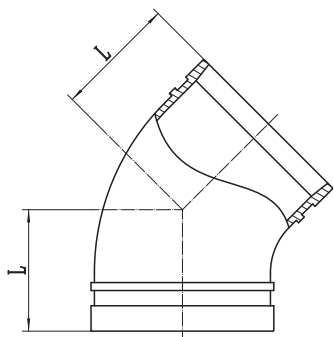
Nominal Size mm/in	Pipe O.D mm/in	Dimensions	Working Pressure (psi)
		L (mm)	
25	33.7	57	300
1	1.327		
32	42.4		
1¼	1.669	70	
40	48.3		
1½	1.9	70	
50	60.3		
2	2.375	83	
65	73		
2½	2.875	95	
65	76.1		
2½	3	95	
80	88.9		
3	3.5	108	
100	114.3		
4	4.5	127	
125	139.7		
5	5.5	140	
125	141.3		
5	5.563	140	
150	159		
6	6.25	165	
150	165.1		
6	6.5	165	
150	168.3		
6	6.625	165	
200	219.1		
8	8.625	197	

Grooved 90° Elbow Standard
XGQT01

Grooved 45°Elbow Short XGQT011



Grooved 45°Elbow Standard XGQT011

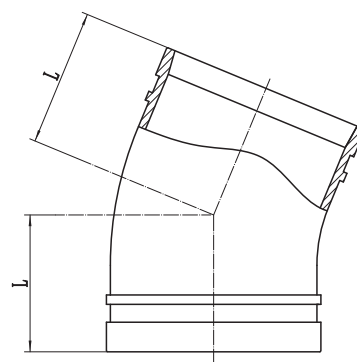


Nominal Size mm/in	Pipe O.D mm/in	Dimensions	Working Pressure (psi)
		L (mm)	
65	76.1	48	300
21/2	3		
80	88.9	53	
3	3.5		
100	108	60	
4	4.25		
100	114.3	60	
4	4.5		
125	133	68	
5	5.25		
125	139.7	68	
5	5.5		
125	141.3	68	
5	5.563		
150	159	75.5	
6	6.25		
150	165.1	75.5	
6	6.5		
150	168.3	75.5	
6	6.625		
200	219.1	95	
8	8.625		
250	273	112	
10	10.75		
300	323.9	135	
12	12.75		

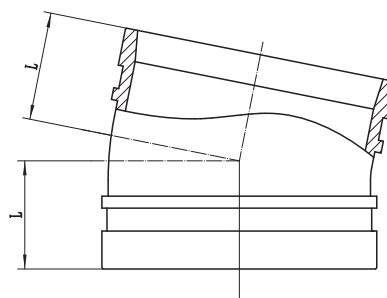
Nominal Size mm/in	Pipe O.D mm/in	Dimensions	Working Pressure (psi)
		L (mm)	
25	33.7	45	300
1	1.327		
32	42.4	45	
1 1/4	1.669		
40	48.3	45	
1 1/2	1.9		
50	60.3	51	
2	2.375		
65	73	62	
2 1/2	2.875		
65	76.1	62	
2 1/2	3		
80	88.9	70	
3	3.5		
100	108	76	
4	4.25		
100	114.3	76	
4	4.5		
125	133	83	
5	5.25		
125	139.7	83	
5	5.5		
125	141.3	83	
5	5.563		
150	159	89	
6	6.25		
150	165.1	89	
6	6.5		
150	168.3	89	
6	6.625		
200	219.1	108	
8	8.625		

Nominal Size mm/in	Pipe O.D mm/in	Dimensions	Working pressure (Psi)
		L (mm)	
50	60.3	48	300
2	2.375		
65	73	51	
2½	2.875		
65	76.1	51	
2½	3		
80	88.9	57	
3	3.5		
100	108	73	
4	4.25		
100	114.3	73	
4	4.5		
125	133	73	
5	5.25		
125	139.7	73	
5	5.5		
125	141.3	73	
5	5.563		
150	159	79	
6	6.25		
150	165.1	79	
6	6.5		
150	168.3	79	
6	6.625		
200	219.1	98	
8	8.625		

**Grooved 22.5°Elbow
XGQT012**

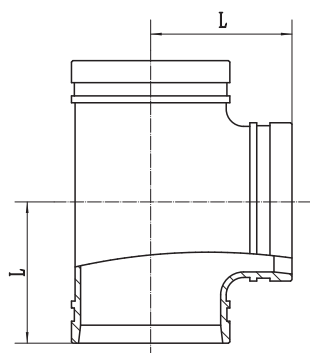


**Grooved 11.25°Elbow
XGQT013**



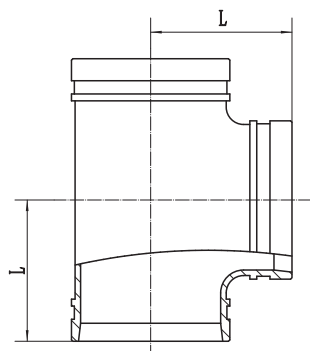
Nominal Size mm/in	Pipe O.D mm/in	Dimensions	Working pressure (Psi)
		L (mm)	
50	60.3	35	300
2	2.375		
65	73	38	
2½	2.875		
65	76.1	38	
2½	3		
80	88.9	38	
3	3.5		
100	108	45	
4	4.25		
100	114.3	45	
4	4.5		
125	133	51	
5	5.25		
125	139.7	51	
5	5.5		
125	141.3	51	
5	5.563		
150	159	51	
6	6.25		
150	165.1	51	
6	6.5		
150	168.3	51	
6	6.625		
200	219.1	51	
8	8.625		

Grooved Tee Short XGQT03



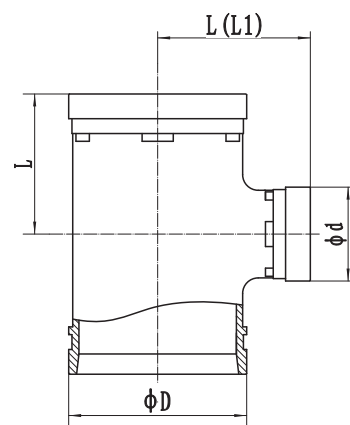
Nominal Size mm/in	Pipe O.D mm/in	Dimensions	Working Pressure (psi)
		L (mm)	
50	60.3	70	300
2	2.375		
65	73	76	
2½	2.875		
65	76.1	76	
2½	3		
80	88.9	85	
3	3.5		
100	108	102	
4	4.25		
100	114.3	102	
4	4.5		
125	133	121	
5	5.25		
125	139.7	121	
5	5.5		
125	141.3	121	
5	5.563		
150	159	130	
6	6.25		
150	165.1	130	
6	6.5		
150	168.3	140	
6	6.625		
200	219.1	175	
8	8.625		
250	273	215	
10	10.75		
300	323.9	220	
12	12.75		

Grooved Tee Standard XGQT03



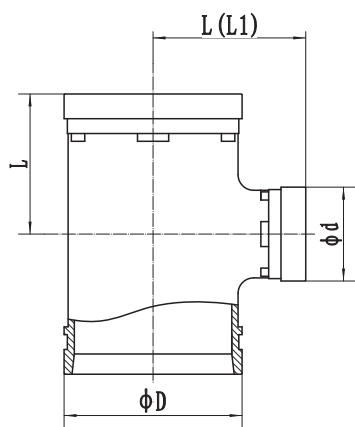
Nominal Size mm/in	Pipe O.D mm/in	Dimensions	Working Pressure (psi)
		L (mm)	
25	33.7	57	300
1	1.327		
32	42.4	70	
1¼	1.669		
40	48.3	70	
1½	1.9		
50	60.3	84	
2	2.375		
65	73	95	
2½	2.875		
65	76.1	95	
2½	3		
80	88.9	108	
3	3.5		
100	114.3	127	
4	4.5		
125	139.7	140	
5	5.5		
125	141.3	140	
5	5.563		
150	159	165	
6	6.25		
150	165.1	165	
6	6.5		
150	168.3	165	
6	6.625		
200	219.1	197	
8	8.625		

Grooved Reducing Tee XGQT03



Nominal Size mm/in	Pipe O.D mm/in	Dimensions				Working pressure (Psi)
		L (mm)		D	d	
		L	L1	mm	mm	
50×32	60.3×42.4	SHORT	SHORT (+)	70	60	300
2×1 ¹ / ₄	2.375×1.669			70	42	
50×40	60.3×48.3	SHORT	SHORT (+)	70	60	
2×1 ¹ / ₂	2.375×1.9			70	48	
65×32	73×42.4	SHORT	SHORT (+)	76	73	
2 ¹ / ₂ ×1 ¹ / ₄	2.875×1.669			76	42	
65×40	73×48.3	SHORT	SHORT (+)	76	73	
2 ¹ / ₂ ×1 ¹ / ₂	2.875×1.9			76	48	
65×50	73×60.3	SHORT	SHORT (+)	76	73	
2 ¹ / ₂ ×2	2.875×2.375			76	60	
65×32	76.1×42.4	SHORT	SHORT (+)	76	76	
2 ¹ / ₂ ×1 ¹ / ₄	3×1.669			76	42	
65×40	76.1×48.3	SHORT	SHORT (+)	76	76	
2 ¹ / ₂ ×1 ¹ / ₂	3×1.9			76	48	
65×50	76.1×60.3	SHORT	SHORT (+)	76	76	
2 ¹ / ₂ ×2	3×2.375			76	60	
80×32	88.9×42.4	SHORT	SHORT (+)	86	89	
3×1 ¹ / ₄	3.5×1.669			86	42	
80×40	88.9×48.3	SHORT	SHORT (+)	86	89	
3×1 ¹ / ₂	3.5×1.9			86	48	
80×50	88.9×60.3	SHORT	SHORT (+)	86	89	
3×2	3.5×2.375			86	60	
80×65	88.9×73	SHORT	SHORT (+)	86	89	
3×2 ¹ / ₂	3.5×2.875			86	73	
80×65	88.9×76.1	SHORT	SHORT (+)	86	89	
3×2 ¹ / ₂	3.5×3			86	76	
100×50	108×60.3	90	98	102	108	
4×2	4.25×2.375	90	98	102	60	
100×65	108×73	90	98	102	108	
4×2 ¹ / ₂	4.25×2.875	90	98	102	73	
100×65	108×76.1	90	98	102	108	
4×2 ¹ / ₂	4.25×3	90	98	102	76	
100×80	108×88.9	90	98	102	108	
4×3	4.25×3.5	90	98	102	89	
100×32	114.3×42.4	90	98	102	114	
4×1 ¹ / ₄	4.5×1.669	90	98	102	42	
100×40	114.3×48.3	90	98	102	114	
4×1 ¹ / ₂	4.5×1.9	90	98	102	48	
100×50	114.3×60.3	90	98	102	114	
4×2	4.5×2.375	90	98	102	60	
100×65	114.3×73	90	98	102	114	
4×2 ¹ / ₂	4.5×2.875	90	98	102	73	
100×65	114.3×76.1	90	98	102	114	
4×2 ¹ / ₂	4.5×3	90	98	102	76	
100×80	114.3×88.9	90	98	102	114	
4×3	4.5×3.5	90	98	102	89	
125×65	133×76.1	105	121	133	76	
5×2 ¹ / ₂	5.25×3			133	76	
125×80	133×88.9	105	121	133	89	
5×3	5.25×3.5			133	89	
125×100	133×108	105	121	133	108	
5×4	5.25×4.25			133	108	
125×100	133×114.3	105	121	133	114	
5×4	5.25×4.5			133	114	
125×50	139.7×60.3	105	121	140	60	
5×2	5.5×2.375			140	60	
125×65	139.7×76.1	105	121	140	76	
5×2 ¹ / ₂	5.5×3			140	76	
125×80	139.7×88.9	105	121	140	89	
5×3	5.5×3.5			140	89	
125×100	139.7×108	105	121	140	108	
5×4	5.5×4.25			140	108	

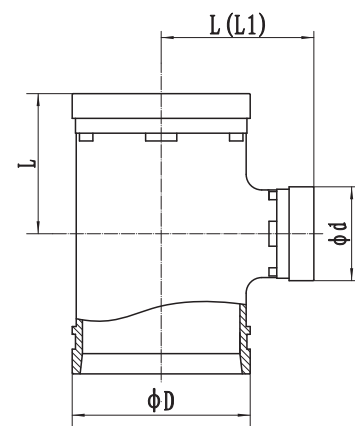
Grooved Reducing Tee XGQT03



Nominal Size mm/in	Pipe O.D mm/in	Dimensions					Working pressure (Psi)
		L (mm)			D	d	
		L	L1	L	mm	mm	
		SHORT		SHORT (+)			
125×100	139.7×114.3	105		121	140	114	300
5×4	5.5×4.5						
125×125	139.7×133	105		121	140	133	
5×5	5.5×5.25						
125×50	141.3×60.3	105		121	141	60	
5×2	5.563×2.375						
125×65	141.3×73	105		121	141	73	
5×2½	5.563×2.875						
125×80	141.3×88.9	105		121	141	89	
5×3	5.563×3.5						
125×100	141.3×114.3	105		121	141	114	
5×4	5.563×4.5						
150×65	159×76.1	110	120	130	159	76	
6×2½	6.25×3						
150×80	159×88.9	110	120	130	159	89	
6×3	6.25×3.5						
150×100	159×108	110	120	130	159	108	
6×4	6.25×4.25						
150×100	159×114.3	110	120	130	159	114	
6×4	6.25×4.5						
150×125	159×133	110	120	130	159	133	
6×5	6.25×5.25						
150×125	159×139.7	110	120	130	159	140	
6×5	6.25×5.5						
150×50	165.1×60.3	110	120	130	165	60	
6×2	6.5×2.375						
150×65	165.1×76.1	110	120	130	165	76	
6×2½	6.5×3						
150×80	165.1×88.9	110	120	130	165	89	
6×3	6.5×3.5						
150×100	165.1×108	110	120	130	165	108	
6×4	6.5×4.25						
150×100	165.1×114.3	110	120	130	165	114	
6×4	6.5×4.5						
150×125	165.1×133	110	120	130	165	133	
6×5	6.5×5.25						
150×125	165.1×139.7	110	120	130	165	140	
6×5	6.5×5.5						
150×50	168.3×60.3	110	120	140	168	60	
6×2	6.625×2.375						
150×65	168.3×76.1	110	120	140	168	76	
6×2½	6.625×3						
150×80	168.3×88.9	110	120	140	168	89	
6×3	6.625×3.5						
150×100	168.3×108	110	120	140	168	108	
6×4	6.625×4.25						
150×100	168.3×114.3	110	120	140	168	114	
6×4	6.625×4.5						
150×125	168.3×133	110	120	140	168	133	
6×5	6.625×5.25						
150×125	168.3×139.7	110	120	140	168	140	
6×5	6.625×5.5						
200×65	219.1×76.1	146		174	219	76	
8×2½	8.625×3						
200×80	219.1×88.9	146		174	219	89	
8×3	8.625×3.5						
200×100	219.1×108	146		174	219	108	
8×4	8.625×4.25						
200×100	219.1×114.3	146		174	219	114	
8×4	8.625×4.5						
200×125	219.1×133	146		174	219	133	
8×5	8.625×5.25						

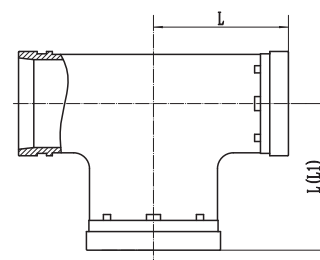
Nominal Size mm/in	Pipe O.D mm/in	Dimensions				Working pressure (Psi)	
		L (mm)			D		d
		L	L1	L	mm		mm
		SHORT		SHORT (+)			
200×125	219.1×139.7	146		174	219	140	300
8×5	8.625×5.5						
200×150	219.1×159	146		174	219	159	
8×6	8.625×6.25						
200×150	219.1×165.1	146		174	219	165	
8×6	8.625×6.5						
250×80	273×88.9	190			273	89	
10×3	10.75×3.5						
250×100	273×108	190			273	108	
10×4	10.75×4.25						
250×100	273×114.3	190			273	114	
10×4	10.75×4.5						
250×125	273×133	190			273	133	
10×5	10.75×5.25						
250×125	273×139.7	190			273	140	
10×5	10.75×5.5						
250×125	273×141.3	190			273	141	
10×5	10.75×5.563						
250×150	273×159	190			273	159	
10×6	10.75×6.25						
250×150	273×165.1	190			273	165	
10×6	10.75×6.5						
250×150	273×168.3	190			273	168	
10×6	10.75×6.625						
250×200	273×219.1	190			273	219	
10×8	10.75×8.625						
300×150	323.9×159	220			325	159	
12×6	12.75×6.25						
300×150	323.9×165.1	220			325	165	
12×6	12.75×6.5						
300×150	323.9×168.3	220			325	168	
12×6	12.75×6.625						
300×200	323.9×219.1	220			325	219	
12×8	12.75×8.625						
300×250	323.9×273	220			325	273	
12×10	12.75×10.75						

Grooved Reducing Tee XGQT03

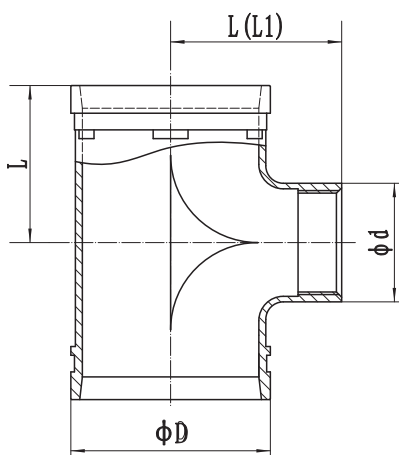


Nominal Size mm/in	Pipe O.D mm/in	Dimensions				Working Pressure (psi)	
		L (mm)		D	d		
		L	L1	mm	mm		
80×100	88.9×114.3	115	125	89	114	2.5MPa (300PSI)	
3×4	3.5×4.5						
100×150	114.3×165.1	140		114	165		
4×6	4.5×6.5						

Bullhead Tee XGQT03

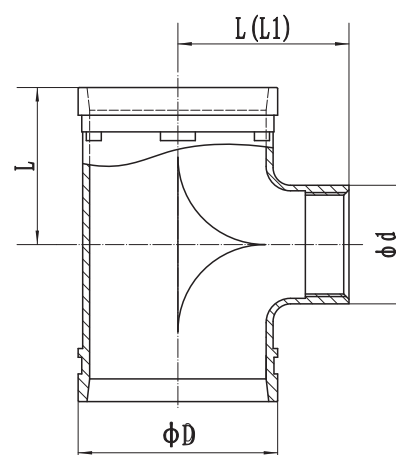


Threaded Reducing Tee XGQT03S



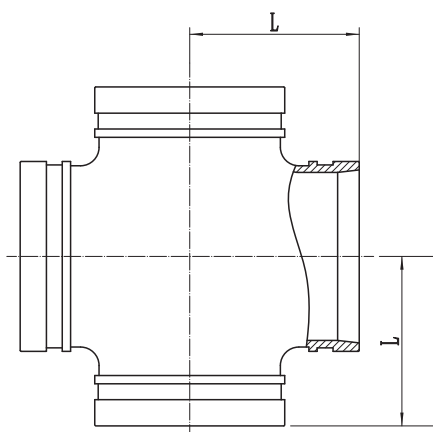
Nominal Size mm/in	Pipe O.D mm/in	Dimensions				Working pressure Psi
		L (mm)		D	d	
		L	L1	mm	mm	
50×25	60.3×33.7	70		60	43	300
2×1	2.375×1.327					
50×32	60.3×42.4	70		60	52	
2×1¼	2.375×1.669					
50×40	60.3×48.3	70		60	58	
2×1½	2.375×1.9					
65×25	73.0×33.7	76		73	43	
2½×1	2.875×1.327					
65×32	73.0×42.4	76		73	52	
2½×1¼	2.875×1.669					
65×40	73.0×48.3	76		73	58	
2½×1½	2.875×1.9					
65×50	73.0×60.3	76		73	70	
2½×2	2.875×2.375					
65×25	76.1×33.7	76		76	43	
2½×1	3×1.327					
65×32	76.1×42.4	76		76	52	
2½×1¼	3×1.669					
65×40	76.1×48.3	76		76	58	
2½×1½	3×1.9					
65×50	76.1×60.3	76		76	70	
2½×2	3×2.375					
80×25	88.9×33.7	86		89	43	
3×1	3.5×1.327					
80×32	88.9×42.4	86		89	52	
3×1¼	3.5×1.669					
80×40	88.9×48.3	86		89	56	
3×1½	3.5×1.9					
80×50	88.9×60.3	86		89	70	
3×2	3.5×2.375					
80×65	88.9×76.1	86		89	86	
3×2½	3.5×3					
100×40	108.0×48.3	90	98	108	58	
4×1½	4.25×1.9					
100×50	108.0×60.3	90	98	108	70	
4×2	4.25×2.375					
100×65	108.0×76.1	90	98	108	86	
4×2½	4.25×3					
100×80	108×88.9	90	98	108	99	
4×3	4.25×3.5					
100×25	114.3×33.7	90	98	114	43	
4×1	4.5×1.327					
100×32	114.3×42.4	90	98	114	52	
4×1¼	4.5×1.669					
100×40	114.3×48.3	90	98	114	58	
4×1½	4.5×1.9					
100×50	114.3×60.3	90	98	114	70	
4×2	4.5×2.375					
100×65	114.3×76.1	90	98	114	86	
4×2½	4.5×3					
100×80	114.3×88.9	90	98	114	99	
4×3	4.5×3.5					
125×50	133.0×60.3	105		133	70	
5×2	5.25×2.375					
125×65	133.0×76.1	105		133	86	
5×2½	5.25×3					
125×80	133.0×88.9	105		133	99	
5×3	5.25×3.5					
125×100	133.0×114.3	105		133	124	
5×4	5.25×4.5					
125×40	139.7×48.3	105		140	58	
5×1½	5.5×1.9					

Threaded Reducing Tee XGQT03S



Nominal Size mm/in	Pipe O.D mm/in	Dimensions				Working pressure Psi
		L (mm)		D	d	
		L	L1	mm	mm	
125×50	139.7×60.3	105		140	70	300
5×2	5.5×2.375					
125×65	139.7×76.1	105		140	86	
5×2½	5.5×3					
125×80	139.7×88.9	105		140	99	
5×3	5.5×3.5					
125×100	139.7×114.3	105		140	124	
5×4	5.5×4.5					
125×40	141.3×48.3	105		141	58	
5×1½	5.563×1.9					
125×50	141.3×60.3	105		141	70	
5×2	5.563×2.375					
125×65	141.3×76.1	105		141	86	
5×2½	5.563×3					
125×80	141.3×88.9	105		141	99	
5×3	5.563×3.5					
125×100	141.3×114.3	105		141	124	
5×4	5.563×4.5					
150×40	159.0×48.3	110	120	159	58	
6×1½	6.25×1.9					
150×50	159.0×60.3	110	120	159	70	
6×2	6.25×2.375					
150×65	159.0×76.1	110	120	159	86	
6×2½	6.25×3					
150×80	159.0×88.9	110	120	159	99	
6×3	6.25×3.5					
150×100	159.0×114.3	110	120	159	124	
6×4	6.25×4.5					
150×40	165.1×48.3	110	120	165	58	
6×1½	6.5×1.9					
150×50	165.1×60.3	110	120	165	70	
6×2	6.5×2.375					
150×65	165.1×76.1	110	120	165	86	
6×2½	6.5×3					
150×80	165.1×88.9	110	120	165	99	
6×3	6.5×3.5					
150×100	165.1×114.3	110	120	165	124	
6×4	6.5×4.5					
150×40	168.3×48.3	110	120	168	58	
6×1½	6.625×1.9					
150×50	168.3×60.3	110	120	168	70	
6×2	6.625×2.375					
150×65	168.3×76.1	110	120	168	86	
6×2½	6.625×3					
150×80	168.3×88.9	110	120	168	99	
6×3	6.625×3.5					
150×100	168.3×114.3	110	120	168	124	
6×4	6.625×4.5					
200×50	219.1×60.3	146		219	70	
8×2	8.625×2.375					
200×50	219.1×76.1	146		219	86	
8×2½	8.625×3					
200×80	219.1×88.9	146		219	99	
8×3	8.625×3.5					
200×100	219.1×114.3	146		219	124	
8×4	8.625×4.5					

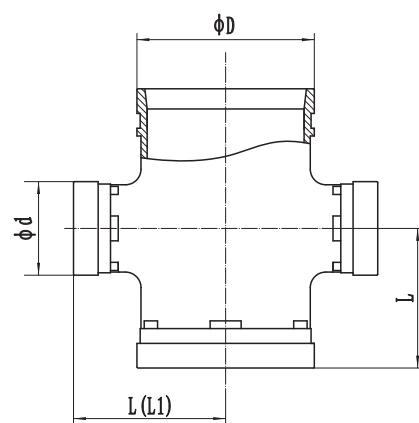
Grooved Cross XGQT05



Nominal Size mm/in	Pipe O.D mm/in	Dimensions	Working Pressure (psi)
		L (mm)	
		Short	
50	60.3	70	300
2	2.375		
65	73		
2½	2.875		
65	76.1	76	
2½	3		
80	88.9		
3	3.5		
100	108	102	
4	4.25		
100	114.3		
4	4.5		
125	133	121	
5	5.25		
125	139.7		
5	5.5		
150	159	130	
6	6.25		
150	165.1		
6	6.5		
150	168.3	140	
6	6.625		
200	219.1		
8	8.625		
250	273	215	
10	10.75		
300	323.9		
12	12.75		

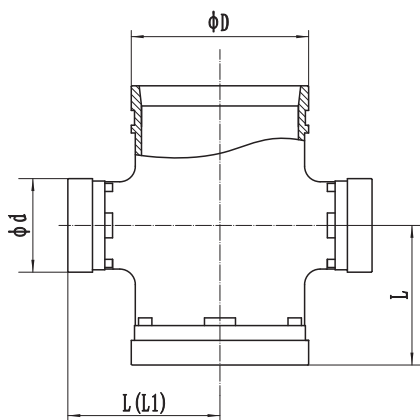
Nominal Size mm/in	Pipe O.D mm/in	Dimensions	Working Pressure (psi)
		L (mm)	
		Standard	
50	60.3	83	300
2	2.375		
65	73	95	
2½	2.875		
65	76.1	95	
2½	3		
80	88.9	108	
3	3.5		
100	108	127	
4	4.25		
100	114.3	127	
4	4.5		
125	133	140	
5	5.25		
125	139.7	140	
5	5.5		
150	159	165	
6	6.25		
150	165.1	165	
6	6.5		
150	168.3	165	
6	6.625		
200	219.1	197	
8	8.625		
250	273	229	
10	10.75		
300	323.9	254	
12	12.75		

Grooved Reducing Cross XGQT05



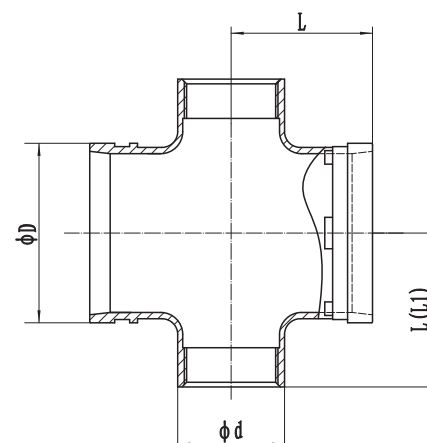
Nominal Size mm/in	Pipe O.D mm/in	Dimensions				Working pressure (Psi)
		L (mm)		D	d	
		L	L1	mm	mm	
65×32	73×42.4	76		73	42	300
2½×1¼	2.875×1.669					
65×40	73×48.3	76		73	48	
2½×1½	2.875×1.9					
65×50	73×60.3	76		73	60	
2½×2	2.875×2.375					
65×32	76.1×42.4	76		76	42	
2½×1¼	3×1.669					
65×40	76.1×48.3	76		76	48	
2½×1½	3×1.9					
65×50	76.1×60.3	76		76	60	
2½×2	3×2.375					
80×32	88.9×42.4	86		89	42	
3×1¼	3.5×1.669					
80×40	88.9×48.3	86		89	48	
3×1½	3.5×1.9					
80×50	88.9×60.3	86		89	60	
3×2	3.5×2.375					
80×65	88.9×76.1	86		89	76	
3×2½	3.5×3					
100×50	108×60.3	90	98	108	60	
4×2	4.25×2.375					
100×65	108×76.1	90	98	108	76	
4×2½	4.25×3					
100×80	108×88.9	90	98	108	89	
4×3	4.25×3.5					
100×32	114.3×42.4	90	98	114	42	
4×1¼	4.5×1.669					
100×40	114.3×48.3	90	98	114	48	
4×1½	4.5×1.9					
100×50	114.3×60.3	90	98	114	60	
4×2	4.5×2.375					
100×65	114.3×76.1	90	98	114	76	
4×2½	4.5×3					
100×80	114.3×88.9	90	98	114	89	
4×3	4.5×3.5					
125×65	133×76.1	105		133	76	
5×2½	5.25×3					
125×80	133×88.9	105		133	89	
5×3	5.25×3.5					
125×100	133×108	105		133	108	
5×4	5.25×4.25					
125×100	133×114.3	105		133	114	
5×4	5.25×4.5					
125×50	139.7×60.3	105		140	60	
5×2	5.5×2.375					
125×65	139.7×76.1	105		140	76	
5×2½	5.5×3					
125×80	139.7×88.9	105		140	89	
5×3	5.5×3.5					
125×100	139.7×108	105		140	108	
5×4	5.5×4.25					
125×100	139.7×114.3	105		140	114	
5×4	5.5×4.5					
125×50	141.3×60.3	105		141	60	
5×2	5.563×2.375					
125×65	141.3×73	105		141	73	
5×2½	5.563×2.875					
125×80	141.3×88.9	105		141	89	
5×3	5.563×3.5					
125×100	141.3×108	105		141	108	
5×4	5.563×4.25					

Grooved Reducing Cross XGQT05



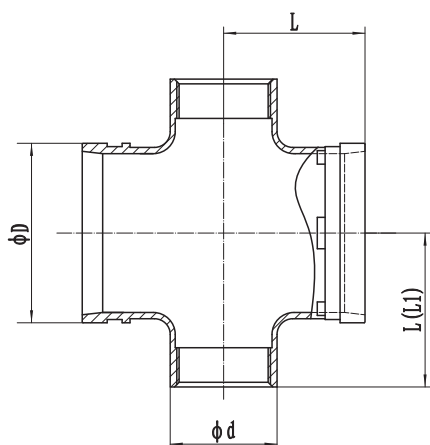
Nominal Size mm/in	Pipe O.D mm/in	Dimensions				Working pressure (Psi)
		L (mm)		D	d	
		L	L1	mm	mm	
125×100	141.3×114.3	105		141	114	300
5×4	5.563×4.5					
150×65	159×76.1	110	120	159	76	
6×2½	6.25×3					
150×80	159×88.9	110	120	159	89	
6×3	6.25×3.5					
150×100	159×108	110	120	159	108	
6×4	6.25×4.25					
150×100	159×114.3	110	120	159	114	
6×4	6.25×4.5					
150×125	159×133	110	120	159	133	
6×5	6.25×5.25					
150×50	165.1×60.3	110	120	165	60	
6×2	6.5×2.375					
150×65	165.1×76.1	110	120	165	76	
6×2½	6.5×3					
150×80	165.1×88.9	110	120	165	89	
6×3	6.5×3.5					
150×100	165.1×108	110	120	165	108	
6×4	6.5×4.25					
150×100	165.1×114.3	110	120	165	114	
6×4	6.5×4.5					
150×125	165.1×133	110	120	165	133	
6×5	6.5×5.25					
150×125	165.1×139.7	110	120	165	140	
6×5	6.5×5.5					
150×50	168.3×60.3	110	120	168	60	
6×2	6.625×2.375					
150×65	168.3×76.1	110	120	168	76	
6×2½	6.625×3					
150×80	168.3×88.9	110	120	168	89	
6×3	6.625×3.5					
150×100	168.3×108	110	120	168	108	
6×4	6.625×4.25					
150×100	168.3×114.3	110	120	168	114	
6×4	6.625×4.5					
150×125	168.3×133	110	120	168	133	
6×5	6.625×5.25					
150×125	168.3×139.7	110	120	168	140	
6×5	6.625×5.5					
200×65	219.1×76.1	146		219	76	
8×2½	8.625×3					
200×80	219.1×88.9	146		219	89	
8×3	8.625×3.5					
200×100	219.1×108	146		219	108	
8×4	8.625×4.25					
200×100	219.1×114.3	146		219	114	
8×4	8.625×4.5					
200×125	219.1×133	146		219	133	
8×5	8.625×5.25					
200×125	219.1×139.7	146		219	140	
8×5	8.625×5.5					
200×150	219.1×159	146		219	159	
8×6	8.625×6.25					
200×150	219.1×165.1	146		219	165	
8×6	8.625×6.5					

Threaded Reducing Cross XGQT05S



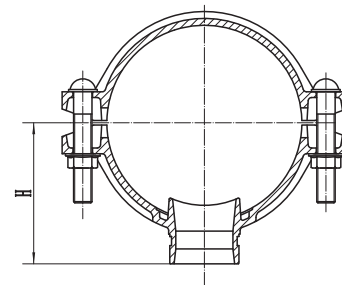
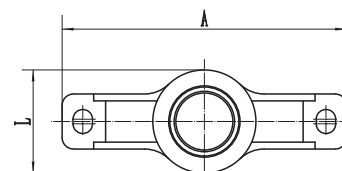
Nominal Size mm/in	Pipe O.D mm/in	Dimensions				Working pressure Psi
		L (mm)		D	d	
		L	L1	mm	mm	
50×25	60.3×33.7	70		60	43	230
2×1	2.375×1.327					
50×32	60.3×42.4	70		60	52	
2×1¼	2.375×1.669					
50×40	60.3×48.3	70		60	58	
2×1½	2.375×1.9					
65×25	73.0×33.7	76		73	43	
2½×1	2.875×1.327					
65×32	73.0×42.4	76		73	52	
2½×1¼	2.875×1.669					
65×40	73.0×48.3	76		73	58	
2½×1½	2.875×1.9					
65×50	73.0×60.3	76		73	70	
2½×2	2.875×2.375					
65×25	76.1×33.7	76		76	43	
2½×1	3×1.327					
65×32	76.1×42.4	76		76	52	
2½×1¼	3×1.669					
65×40	76.1×48.3	76		76	58	
2½×1½	3×1.9					
65×50	76.1×60.3	76		76	70	
2½×2	3×2.375					
80×25	88.9×33.7	86		89	43	
3×1	3.5×1.327					
80×32	88.9×42.4	86		89	52	
3×1¼	3.5×1.669					
80×40	88.9×48.3	86		89	58	
3×1½	3.5×1.9					
80×50	88.9×60.3	86		89	70	
3×2	3.5×2.375					
80×65	88.9×76.1	86		89	86	
3×2½	3.5×3					
100×50	108.0×60.3	90	98	108	70	
4×2	4.25×2.375					
100×65	108.0×76.1	90	98	108	86	
4×2½	4.25×3					
100×80	108×88.9	90	98	108	99	
4×3	4.25×3.5					
100×25	114.3×33.7	90	98	114	43	
4×1	4.5×1.327					
100×32	114.3×42.4	90	98	114	52	
4×1¼	4.5×1.669					
100×40	114.3×48.3	90	98	114	58	
4×1½	4.5×1.9					
100×50	114.3×60.3	90	98	114	70	
4×2	4.5×2.375					
100×65	114.3×76.1	90	98	114	86	
4×2½	4.5×3					
100×80	114.3×88.9	90	98	114	99	
4×3	4.5×3.5					
125×40	139.7×48.3	105		140	58	
5×1½	5.5×1.9					
125×50	139.7×Rc2	105		140	70	
5×2	5.5×2.375					
125×65	139.7×76.1	105		140	86	
5×2½	5.5×3					
125×80	139.7×88.9	105		140	99	
5×3	5.5×3.5					
125×100	139.7×114.3	105		140	124	
5×4	5.5×4.5					
125×40	141.3×48.3	105		141	58	
5×1½	5.563×1.9					

Threaded Reducing Cross XGQT05S



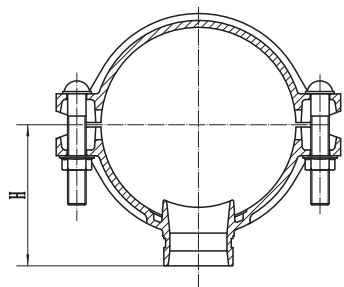
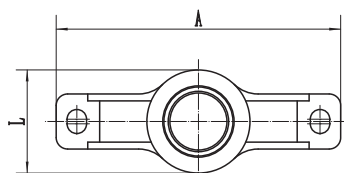
Nominal Size mm/in	Pipe O.D mm/in	Dimensions				Working pressure Psi
		L (mm)		D	d	
		L	L1	mm	mm	
125×50	141.3×60.3	105		141	70	230
5×2	5.563×2.375					
125×65	141.3×73	105		141	86	
5×2½	5.563×2.875					
125×80	141.3×88.9	105		141	99	
5×3	5.563×3.5					
125×100	141.3×114.3	105		141	124	
5×4	5.563×4.5					
150×50	159.0×60.3	110	120	159	70	
6×2	6.250×2.375					
150×65	159.0×76.1	110	120	159	86	
6×2½	6.25×3					
150×80	159.0×88.9	110	120	159	99	
6×3	6.25×3.5					
150×100	159×114.3	110	120	159	124	
6×4	6.25×4.5					
150×40	165.1×48.3	110	120	165	58	
6×1½	6.5×1.9					
150×50	165.1×60.3	110	120	165	70	
6×2	6.5×2.375					
150×65	165.1×76.1	110	120	165	86	
6×2½	6.5×3					
150×80	165.1×88.9	110	120	165	99	
6×3	6.5×3.5					
150×100	165.1×114.3	110	120	165	124	
6×4	6.5×4.5					
150×40	168.3×48.3	110	120	168	58	
6×1½	6.625×1.9					
150×50	168.3×60.3	110	120	168	70	
6×2	6.625×2.375					
150×65	168.3×76.1	110	120	168	86	
6×2½	6.625×3					
150×80	168.3×88.9	110	120	168	99	
6×3	6.625×3.5					
150×100	168.3×Rc4	110	120	168	124	
6×4	6.625×4.5					
200×50	219.1×60.3	146		219	70	
8×2	8.625×2.375					
200×50	219.1×76.1	146		219	86	
8×2½	8.625×3					
200×80	219.1×88.9	146		219	99	
8×3	8.625×3.5					
200×100	219.1×114.3	146		219	124	
8×4	8.625×4.5					

Grooved Mechanical Tee XGQT04G



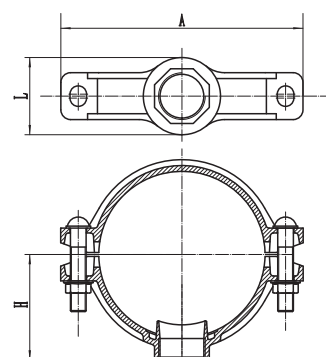
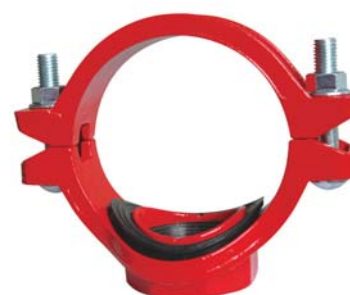
Nominal Size mm/in	Pipe O.D mm/in	Dimensions			Hole Dimension (Φ-mm)	Bolt/Nut	Working pressure Psi
		A mm	L mm	H mm		No.-size (mm)	
50×25	60.3×33.7	120	64	70	38	3/8×2 (M10×50)	300
2×1	2.375×1.327						
50×32	60.3×42.4						
2×1¼	2.375×1.669	120	72	70	46		
50×40	60.3×48.3						
2×1½	2.375×1.9						
65×25	73×33.7	139	64	73	38	3/8×2-1/8 (M10×55)	
2½×1	2.875×1.327						
65×32	73×42.4						
2½×1¼	2.875×1.669	139	72	73	46		
65×40	73×48.3						
2½×1½	2.875×1.9						
65×25	76.1×33.7	139	64	73	38		
2½×1	3×1.327						
65×32	76.1×42.4						
2½×1¼	3×1.669	139	72	73	46		
65×40	76.1×48.3						
2½×1½	3×1.9						
80×25	88.9×33.7	155	64	82	38		
3×1	3.5×1.327						
80×32	88.9×42.4						
3×1¼	3.5×1.669	155	72	82	46		
80×40	88.9×48.3						
3×1½	3.5×1.9						
80×50	88.9×60.3	155	90	82	64		
3×2	3.5×2.375						
100×50	108×60.3						
4×2	4.25×2.375	172	90	92.5	64	1/2×2-5/8 (M12×65)	
100×65	108×76.1	172	107	92.5	80		
4×2½	4.25×3						
100×25	114.3×33.7	181	64	95.5	38		
4×1	4.5×1.327						
100×32	114.3×42.4	181	72	95.5	46		
4×1¼	4.5×1.669						
100×40	114.3×48.3	181	79	95.5	53		
4×1½	4.5×1.9						
100×50	114.3×60.3	181	90	95.5	64		
4×2	4.5×2.375						
100×65	114.3×73	181	117	99	70		
4×2½	4.5×2.875						
100×65	114.3×76.1	181	117	99	70		
4×2½	4.5×3						
100×80	114.3×88.9	181	136	99	89		
4×3	4.5×3.5						
125×40	133×48.3	205	90	105.5	53	1/2×3 (M12×75)	
5×1½	5.25×1.9						
125×50	133×60.3	205	100	105.5	64		
5×2	5.25×2.375						
125×65	133×76.1	205	117	105.5	80		
5×2½	5.25×3						
125×80	133×88.9	205	129	105.5	92		
5×3	5.25×3.5						
125×40	139.7×48.3	212	90	109	53		
5×1½	5.5×1.9						
125×50	139.7×60.3	212	100	109	64		
5×2	5.5×2.375						
125×65	139.7×76.1	212	117	109	70		
5×2½	5.5×3						
125×80	139.7×88.9	212	129	109	89		
5×3	5.5×3.5						
125×100	139.7×114.3	212	154	113	114		
5×4	5.5×4.5						

Grooved Mechanical Tee XGQT04G



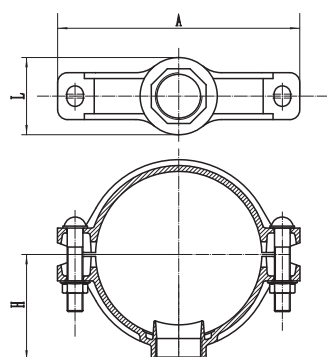
Nominal Size mm/in	Pipe O.D mm/in	Dimensions			Hole Dimension (Φ-mm)	Bolt/Nut	Working pressure Psi
		A	L	H		No.-size (mm)	
		mm	mm	mm			
125×40	141.3×48.3	212	90	109	53	1/2×3 (M12×75)	300
5×1½	5.563×1.9						
125×50	141.3×60.3	212	100	109	64		
5×2	5.563×2.375						
125×65	141.3×73	212	117	113	70		
5×2½	5.563×2.875						
125×80	141.3×88.9	212	136	113	89		
5×3	5.563×3.5						
150×50	159×60.3	233	100	118	64	9/16×3 (M14×75)	
6×2	6.25×2.375						
150×65	159×76.1	233	117	118	80		
6×2½	6.25×3						
150×80	159×88.9	233	129	118	92		
6×3	6.25×3.5						
150×100	159×108	233	143	119.5	104		
6×4	6.25×4.25						
150×100	159×114.3	233	153	119.5	111		
6×4	6.25×4.5						
150×50	165.1×60.3	239	100	121	64		
6×2	6.5×2.375						
150×65	165.1×76.1	248	107	126	80		
6×2½	6.5×3						
150×80	165.1×88.9	239	129	121	92		
6×3	6.5×3.5						
150×100	165.1×108	239	143	122	104		
6×4	6.5×4.25						
150×100	165.1×114.3	239	153	122.5	114		
6×4	6.5×4.5						
150×32	168.3×42.4	248	72	121	46	5/8×3-1/3 (M16×85)	
6×1¼	6.625×1.669						
150×40	168.3×48.3	248	79	121	53		
6×1½	6.625×1.9						
150×50	168.3×60.3	239	100	121	64	9/16×3-1/3 (M14×85)	
6×2	6.625×2.375						
150×65	168.3×73	248	117	127	70		
6×2½	6.625×2.875						
150×65	168.3×76.1	248	117	127	70		
6×2½	6.625×3						
150×80	168.3×88.9	248	136	127	89		
6×3	6.625×3.5						
150×100	168.3×114.3	248	162	129	114		
6×4	6.625×4.5						
200×50	219.1×60.3	311	100	147.5	64	5/8×3-1/3 (M16×85)	
8×2	8.625×2.375						
200×65	219.1×73	311	117	154	70		
8×2½	8.625×2.875						
200×65	219.1×76.1	311	117	154	70		
8×2½	8.625×3						
200×80	219.1×88.9	311	136	154	89		
8×3	8.625×3.5						
200×100	219.1×108	311	143	148.5	104		
8×4	8.625×4.25						
200×100	219.1×114.3	311	162	156	114		
8×4	8.625×4.5						
200×125	219.1×133	311	168	149	129		
8×5	8.625×5.25						
200×125	219.1×139.7	311	178	149	135	3/4×3-1/2 (M20×90)	
8×5	8.625×5.5						
250×100	273×114	379	147	177	104		
10×4	10.75×4.5						

Threaded Mechanical Tee XGQT04



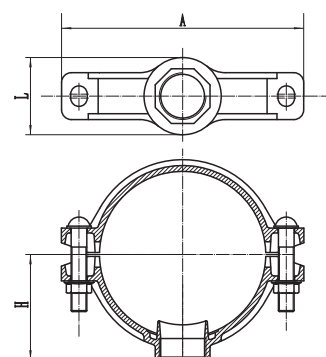
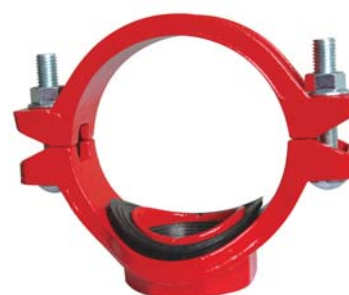
Nominal Size mm/in	Pipe O.D mm/in	Dimensions			Pipehole Dia (Φ-mm)	Bolt/Nut	Working pressure Psi
		A	L	H		Size (mm)	
		mm	mm	mm			
50×15	60.3×21.3	120	54	50	30	3/8×2 (M10×50)	300
2×1/2	2.375×0.825						
50×20	60.3×26.7	120	54	50	30		
2×3/4	2.375×1.05						
50×25	60.3×33.7	120	64	50	38		
2×1	2.375×1.327						
50×32	60.3×42.4	120	72	55	46		
2×1 1/4	2.375×1.669						
50×40	60.3×48.3	120	72	63	46		
2×1 1/2	2.375×1.9						
65×15	73×21.3	139	54	58	30		
2 1/2×1 1/2	2.375×0.825						
65×20	73×26.7	139	54	58	30		
2 1/2×3/4	2.875×1.05						
65×25	73.0×33.7	139	65	60	38		
2 1/2×1	2.875×1.327						
65×32	73.0×42.4	139	72	60	46		
2 1/2×1 1/4	2.875×1.669						
65×40	73.0×48.3	139	79	60	53		
2 1/2×1 1/2	2.875×1.9						
65×15	76.1×21.3	139	54	58	30		
2 1/2×1 1/2	3×0.825						
65×20	76.1×26.7	139	54	58	30		
2 1/2×3/4	3×1.05						
65×25	76.1×33.7	139	65	60	38		
2 1/2×1	3×1.327						
65×32	76.1×42.4	139	72	60	46		
2 1/2×1 1/4	3×1.669						
65×40	76.1×48.3	139	79	60	53		
2 1/2×1 1/2	3×1.9						
80×15	88.9×21.3	155	59	66.5	30		
3×1/2	3.5×0.825						
80×20	88.9×26.7	155	59	66.5	30		
3×3/4	3.5×1.05						
80×25	88.9×33.7	155	64	67	38		
3×1	3.5×1.327						
80×32	88.9×42.4	155	72	67	46		
3×1 1/4	3.5×1.669						
80×40	88.9×48.3	155	79	67	53		
3×1 1/2	3.5×1.9						
80×50	88.9×60.3	155	90	67	64		
3×2	3.5×2.375						
100×25	108.1×33.7	167	76	76	38		
4×1	4.250×1.327						
100×32	108.0×42.4	167	83	76	46		
4×1 1/4	4.25×1.669						
100×40	108.0×48.3	167	90	76	53		
4×1 1/2	4.25×1.9						
100×50	108.0×60.3	167	100	78	64		
4×2	4.25×2.375						

Threaded Mechanical Tee XGQT04



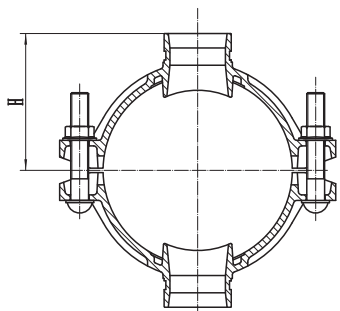
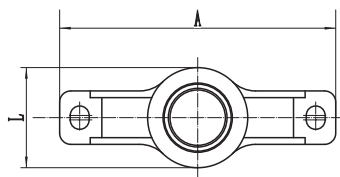
Nominal Size mm/in	Pipe O.D mm/in	Dimensions			Pipehole Dia (Φ-mm)	Bolt/Nut	Working pressure Psi
		A mm	L mm	H mm		Size (mm)	
100×65	108.0×76.1	167	117	105	80	1/2×2-5/8 (M12×65)	300
4×2 1/2	4.25×3						
100×25	114.3×33.7	181	64	79	38		
4×1	4.5×1.327						
100×32	114.3×42.4	181	72	79	46		
4×1 1/4	4.5×1.669						
100×40	114.3×48.3	181	79	79	53		
4×1 1/2	4.5×1.9						
100×50	114.3×60.3	181	90	79	64		
4×2	4.5×2.375						
100×65	114.3×76.1	181	117	105	70		
4×2 1/2	4.5×3						
100×80	114.3×88.9	181	129	83	89		
4×3	4.5×3.5						
125×25	133.0×33.7	205	76	89	38	1/2×3 (M12×75)	
5×1	5.250×1.327						
125×32	133.0×42.4	205	83	89	46		
5×1 1/4	5.25×1.669						
125×40	133.0×48.3	205	90	89	53		
5×1 1/2	5.25×1.9						
125×50	133.0×60.3	205	100	89	64		
5×2	5.25×2.375						
125×65	133.0×76.1	205	117	92	80		
5×2 1/2	5.25×3						
125×80	133.0×88.9	205	129	94	92		
5×3	5.25×3.5						
125×25	139.7×33.7	212	76	93	38		
5×1	5.5×1.327						
125×32	139.7×42.4	212	83	93	46		
5×1 1/4	5.5×1.669						
125×40	139.7×48.3	212	90	93	53		
5×1 1/2	5.5×1.9						
125×50	139.7×60.3	212	100	93	64		
5×2	5.5×2.375						
125×65	139.7×76.1	212	117	93	70		
5×2 1/2	5.5×3						
125×80	139.7×88.9	212	129	95	89		
5×3	5.5×3.5						
125×25	141.3×33.7	212	76	93	38		
5×1	5.563×1.327						
125×32	141.3×42.4	212	83	93	46		
5×1 1/4	5.563×1.669						
125×40	141.3×48.3	212	90	93	53		
5×1 1/2	5.563×1.9						
125×50	141.3×60.3	212	100	93	64		
5×2	5.563×2.375						
125×65	141.3×76.1	212	117	115	70		
5×2 1/2	5.563×3						
125×80	141.3×88.9	212	136	118	89		
5×3	5.563×3.5						

Threaded Mechanical Tee XGQT04



Nominal Size mm/in	Pipe O.D mm/in	Dimensions			Pipehole Dia (Φ-mm)	Bolt/Nut	Working pressure Psi
		A	L	H		Size (mm)	
		mm	mm	mm			
150×25	159×33.7	233	76	101.5	38	9/16×3 (M14×75)	300
6×1	6.250×1.327						
150×32	159.0×42.4	233	83	101.5	46		
6×1¼	6.250×1.669						
150×40	159.0×48.3	233	90	101.5	53		
6×1½	6.250×1.9						
150×50	159.0×60.3	233	100	101.5	64		
6×2	6.250×2.375						
150×65	159.0×76.1	233	117	105.5	80	5/8×3-1/3 (M16×85)	
6×2½	6.250×3						
150×80	159.0×88.9	233	129	105.5	92		
6×3	6.250×3.5						
150×100	159.0×114.3	233	157	110	118		
6×4	6.250×4.5						
150×25	165.1×33.7	248	64	106	38	5/8×3-1/3 (M16×85)	
6×1	6.5×1.327						
150×32	165.1×42.4	248	72	106	46		
6×1¼	6.5×1.669						
150×40	165.1×48.3	248	79	106	53		
6×1½	6.5×1.9						
150×50	165.1×60.3	248	90	106	64		
6×2	6.5×2.375						
150×65	165.1×76.1	248	107	106	80		
6×2½	6.5×3						
150×80	165.1×88.9	248	118	108	92		
6×3	6.5×3.5						
150×100	165.1×114.3	239	157	110	118		
6×4	6.5×4.5						
150×25	168.3×33.7	248	64	106	38	5/8×3-1/3 (M16×85)	
6×1	6.625×1.327						
150×32	168.3×42.4	248	72	106	46		
6×1¼	6.625×1.669						
150×40	168.3×48.3	248	79	106	53		
6×1½	6.625×1.9						
150×50	168.3×60.3	248	90	106	64		
6×2	6.625×2.375						
150×65	168.3×76.1	248	117	128	70		
6×2½	6.625×3						
150×80	168.3×88.9	248	136	131	89		
6×3	6.625×3.5						
150×100	168.3×Rc4	248	162	139.5	114		
6×4	6.625×4.5						
200×25	219.1×33.7	311	76	131	38	5/8×3-1/3 (2-M16×85)	
8×1	8.625×1.327						
200×32	219.1×42.4	311	83	134	46		
8×1¼	8.625×1.669						
200×40	219.1×48.3	311	90	134	53		
8×1½	8.625×1.9						
200×50	219.1×60.3	311	100	134	64		
8×2	8.625×2.375						
200×65	219.1×76.1	311	117	156	70		
8×2½	8.625×3						
200×80	219.1×88.9	311	136	158.5	89		
8×3	8.625×3.5						
200×100	219.1×114.3	311	162	167	114		
8×4	8.625×4.5						
250×65	273.0×76.1	379	117	159	80	3/4×3-1/2 (M20×90)	
10×2½	10.75×3						
250×80	273.0×88.9	379	129	162	92		
10×3	10.75×3.5						

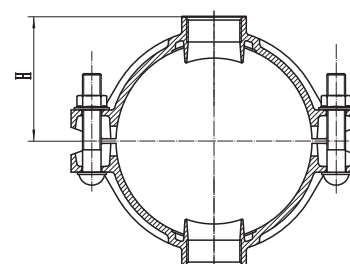
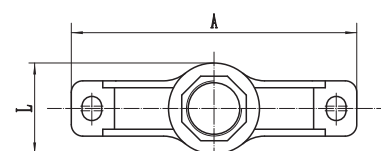
Grooved Mechanical Cross XGQT04G



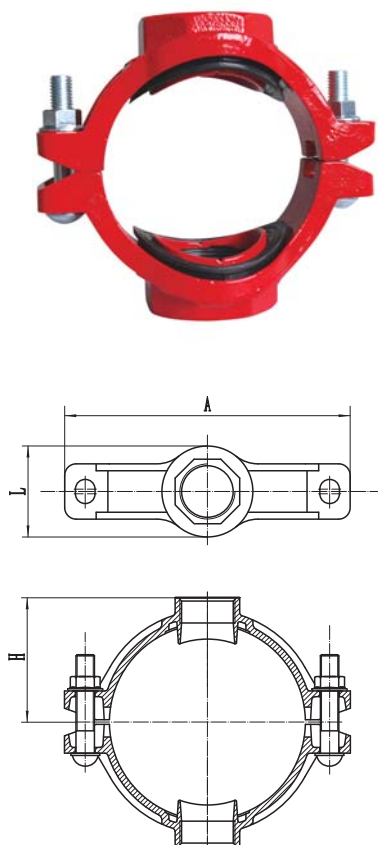
Nominal Size mm/in	Pipe O.D mm/in	Dimensions			Hole Dimension (Φ-mm)	Bolt/Nut	Working pressure (psi)
		A	L	H			
		mm	mm	mm		No.-size (mm)	
65×25	76.1×33.7	139	72	73	38	3/8×2-1/8 (M10×55)	300
2½×1	3×1.327						
65×32	76.1×42.4	139	83	73	46		
2½×1¼	3×1.669						
65×40	76.1×48.3	139	90	75	53		
2½×1½	3×1.9						
80×32	88.9×42.4	155	83	82	46		
3×1¼	3.5×1.669						
80×40	88.9×48.3	155	90	82	53		
3×1½	3.5×1.9						
80×50	88.9×60.3	155	100	82	64		
3×2	3.5×2.375						
100×50	108×60.3	167	100	92.5	64	1/2×3 (M12×75)	
4×2	4.25×2.375						
100×25	114.3×33.7	181	72	95.5	38		
4×1	4.5×1.327						
100×32	114.3×42.4	181	83	95.5	46		
4×1¼	4.5×1.669						
100×40	114.3×48.3	181	90	95.5	53		
4×1½	4.5×1.9						
100×50	114.3×60.3	181	117	95.5	64		
4×2	4.5×2.375						
125×40	139.7×48.3	212	90	109	53		
5×1½	5.5×1.9						
125×50	139.7×60.3	212	100	109	64		
5×2	5.5×2.375						
125×65	139.7×76.1	212	117	109	70		
5×2½	5.5×3						
125×40	141.3×48.3	212	90	109	53		
5×1½	5.563×1.9						
125×50	141.3×60.3	212	100	109	64		
5×2	5.563×2.375						
125×65	141.3×73	212	117	113	70		
5×2½	5.563×2.875						
150×50	159×60.3	233	100	118	64	9/16×3-1/3 (M14×85)	
6×2	6.25×2.375						
150×65	159×76.1	233	117	118	80		
6×2½	6.25×3						
150×80	159×88.9	233	129	118	92		
6×3	6.25×3.5						
150×50	165.1×60.3	239	100	121	64		
6×2	6.5×2.375						
150×65	165.1×76.1	248	107	126	80		
6×2½	6.5×3						
150×80	165.1×88.9	239	129	121	92		
6×3	6.5×3.5						
150×50	168.3×60.3	239	100	121	64		
6×2	6.625×2.375						
150×65	168.3×76.1	248	117	127	70		
6×2½	6.625×3						
150×80	168.3×88.9	248	136	127	89		
6×3	6.625×3.5						
200×50	219.1×60.3	311	100	147.5	64	5/8×3-1/3 (M16×85)	
8×2	8.625×2.375						
200×65	219.1×76.1	311	117	147.5	70		
8×2½	8.625×3						
200×80	219.1×88.9	311	129	147.5	89		
8×3	8.625×3.5						
200×100	219.1×108	311	143	148.5	104		
8×4	8.625×4.25						
200×100	219.1×114.3	311	153	149	114		
8×4	8.625×4.5						

Threaded Mechanical Cross XGQT04

Nominal Size mm/in	Pipe O.D mm/in	Dimensions			Hole Dimension (Φ-mm)	Bolt/Nut	Working pressure (Mpa)
		A	L	H		No.-size (mm)	
		mm	mm	mm			
65×25	76.1×33.7	139	76	60	38	3/8×2-1/8 (M10×55)	230
2½×1	3×1.327						
65×32	76.1×42.4	139	83	60	46		
2½×1¼	3×1.669						
80×25	88.9×33.7	152	76	63.5	38		
3×1	3.5×1.327						
80×32	88.9×42.4	152	83	64.5	46		
3×1¼	3.5×1.669						
80×40	88.9×48.3	152	90	65.5	53		
3×1½	3.5×1.9						
100×25	108.1×33.7	167	76	76	38	1/2×3 (M12×75)	
4×1	4.25×1.327						
100×32	108.0×42.4	167	83	76	46		
4×1¼	4.25×1.669						
100×40	108.0×48.3	167	90	76	53		
4×1½	4.25×1.9						
100×50	108.0×60.3	167	100	78	64		
4×2	4.25×2.375						
100×25	114.3×33.7	181	76	79	38		
4×1	4.5×1.327						
100×32	114.3×42.4	181	83	79	46		
4×1¼	4.5×1.669						
100×40	114.3×48.3	181	90	79	53		
4×1½	4.5×1.9						
100×50	114.3×60.3	181	100	83	64		
4×2	4.5×2.375						
125×25	139.7×33.7	212	76	93	38		
5×1	5.5×1.327						
125×32	139.7×42.4	212	83	93	46		
5×1¼	5.5×1.669						
125×40	139.7×48.3	212	90	93	53		
5×1½	5.5×1.9						
125×50	139.7×60.3	212	100	93	64		
5×2	5.5×2.375						
125×65	139.7×76.1	212	117	93	70		
5×2½	5.5×3						
150×25	165.1×33.7	248	64	106	38		9/16×3-1/3 (M14×85)
6×1	6.5×1.327						
150×32	165.1×42.4	248	72	106	46		
6×1¼	6.5×1.669						
150×40	165.1×48.3	239	79	106	53		
6×1½	6.5×1.9						
150×50	165.1×60.3	248	90	106	64		
6×2	6.5×2.375						
150×65	165.1×76.1	248	107	106	80		
6×2½	6.5×3						
150×80	165.1×88.9	248	118	108	92		
6×3	6.5×3.5						
150×25	168.3×33.7	248	64	106	38		
6×1	6.625×1.327						
150×32	168.3×42.4	248	72	106	46		
6×1¼	6.625×1.669						

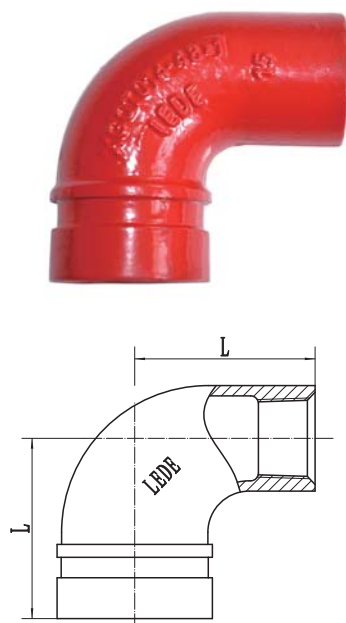


Threaded Mechanical Cross XGQT04



Nominal Size mm/in	Pipe O.D mm/in	Dimensions			Hole Dimension (Φ-mm)	Bolt/Nut	Working pressure (Mpa)
		A	L	H		No.-size (mm)	
		mm	mm	mm			
150×40	168.3×48.3	248	79	106	53	9/16×3-1/3 (M14×85)	230
6×1½	6.625×1.9						
150×50	168.3×60.3						
6×2	6.625×2.375	248	90	106	64		
150×65	168.3×76.1						
6×2½	6.625×3						
150×80	168.3×88.9	248	136	131	89		
6×3	6.625×3.5						
200×25	219.1×33.7						
8×1	8.625×1.327	311	76	131	38		
200×32	219.1×42.4						
8×1¼	8.625×1.669						
200×40	219.1×48.3	311	90	134	53		
8×1½	8.625×1.9						
200×50	219.1×60.3						
8×2	8.625×2.375	311	100	134	64		
200×65	219.1×76.1						
8×2½	8.625×3						
200×80	219.1×88.9	311	136	158.5	89		
8×3	8.625×3.5						
200×100	219.1×114.3						
8×4	8.625×4.5	311	162	167	114		

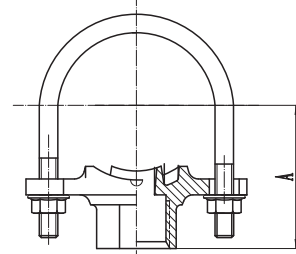
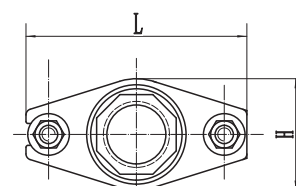
90° Reducing Elbow XGQT014



Nominal Size (mm/in)	Dimensions L (mm)	Working Pressure (psi)
32×15	61	300
1 1/4×1 1/2		
32×20		
1 1/4×3 3/4		
32×25		
1 1/4×1		
40×15	64	
1 1/2×1 1/2		
40×20		
1 1/2×3 3/4		
40×25		
1 1/2×1		
50×15	70	
2×1 1/2		
50×20		
2×3 3/4		
50×25		
2×1		
65×15	76	
2 1/2×1 1/2		
65×20		
2 1/2×3 3/4		
65×25		
2 1/2×1		

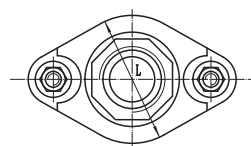
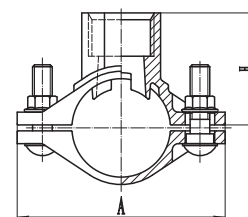
Nominal Size mm/in	Pipe O.D mm/in	Dimensions			Bolt	Working pressure Psi
		A	L	H	inch/mm	
		mm	mm	mm		
25×15	24.00	46	74	44	5/16×1-3/4 (M8×44)	300
1×1/2	0.95					
25×20	24.00	46	74	44	5/16×1-3/4 (M8×44)	
1×3/4	0.95					
32×15	30.00	53	89	56	3/8×3-1/8 (M10×78)	
1 1/4×1 1/2	1.18					
32×20	30.00	53	89	56		
1 1/4×3/4	1.18					
32×25	30.00	56	89	56		
1 1/4×1	1.18					
40×15	30.00	55	89	56		
1 1/2×1 1/2	1.18					
40×20	30.00	55	89	56		
1 1/2×3/4	1.18					
40×25	30.00	58	89	56		
1 1/2×1	1.18					
50×15	30.00	64	98	56	3/8×3-3/5 (M10×92)	
2×1/2	1.18					
50×20	30.00	64	98	56		
2×3/4	1.18					
50×25	30.00	67	98	56		
2×1	1.18					
65×15	30.00	69	111	56	3/8×4-1/4 (M10×108)	
2 1/2×1 1/2	1.18					
65×20	30.00	69	111	56		
2 1/2×3/4	1.18					
65×25	30.00	72	111	56		
2 1/2×1	1.18					
80×25	30.00	80.5	128	56	3/8×4-5/16 (M10×135)	
3×1	1.18					

U-Bolt Mechanical Tee 041

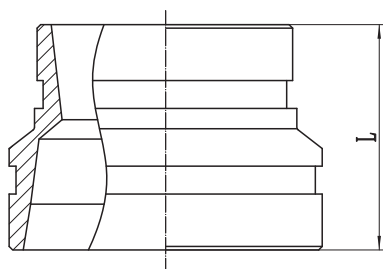


Nominal Size mm/in	Pipe O.D mm/in	Dimensions			Bolt	Working pressure Psi
		A	L	H	inch/mm	
		mm	mm	mm		
25×15	24.00	93	48	28	3/8×1-1/2 (M10×40)	300
1×1/2	0.95					
32×15	30.00	98	65	45		
1¼×1½	1.18					
32×20	30.00	98	65	45		
1¼×¾	1.18					
32×25	30.00	98	65	54		
1¼×1	1.18					
40×15	30.00	105.6	65	48		
1½×1½	1.18					
40×20	30.00	105.6	65	48		
1½×¾	1.18					
40×25	30.00	105.6	65	57		
1½×1	1.18					
50×15	30.00	120	56	53	3/8×2-1/8 (M10×55)	
2×1½	1.18					
50×20	30.00	120	56	54		
2×¾	1.18					
65×15	30.00	139	56	61		
2½×1½	1.18					
65×20	30.00	139	56	61		
2½×¾	1.18					

Small Threaded Mechanical Tee L922



Grooved Reducer XGQT07



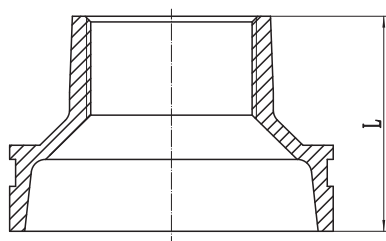
Nominal Size mm/in	Pipe O.D mm/in	Dimensions	Working pressure (Psi)
		L (mm)	
40×32	48.3×42.4	64	300
1½×1¼	1.9×1.669		
50×32	60.3×42.4		
2×1¼	2.375×1.669	64	
50×40	60.3×48.3		
2×1½	2.375×1.9		
65×32	73×42.4	64	
2½×1¼	2.875×1.669		
65×40	73×48.3		
2½×1½	2.875×1.9	64	
65×50	73×60.3		
2½×2	2.875×2.375		
65×40	76.1×48.3	64	
2½×1½	3×1.9		
65×50	76.1×60.3		
2½×2	3×2.375	64	
80×32	88.9×42.4		
3×1¼	3.5×1.669		
80×40	88.9×48.3	64	
3×1½	3.5×1.9		
80×50	88.9×60.3		
3×2	3.5×2.375	64	
80×65	88.9×73		
3×2½	3.5×2.875		
80×65	88.9×76.1	64	
3×2½	3.5×3		
100×50	108×60.3		
4×2	4.25×2.375	76	
100×65	108×73		
4×2½	4.25×2.875		
100×65	108×76.1	76	
4×2½	4.25×3		
100×80	108×88.9		
4×3	4.25×3.5	76	
100×32	114.3×42.4		
4×1¼	4.5×1.669		
100×40	114.3×48.3	76	
4×1½	4.5×1.9		
100×50	114.3×60.3		
4×2	4.5×2.375	76	
100×65	114.3×73		
4×2½	4.5×2.875		
100×65	114.3×76.1	76	
4×2½	4.5×3		
100×80	114.3×88.9		
4×3	4.5×3.5	76	
125×50	133×60.3		
5×2	5.25×2.375		
125×65	133×73	85	
5×2½	5.25×2.875		
125×65	133×76.1		
5×2½	5.25×3	85	
125×80	133×88.9		
5×3	5.25×3.5		
125×100	133×108	85	
5×4	5.25×4.25		
125×100	133×114.3		
5×4	5.25×4.5	85	
125×50	139.7×60.3		
5×2	5.5×2.375		
125×65	139.7×73	85	
5×2½	5.5×2.875		

Nominal Size mm/in	Pipe O.D mm/in	Dimensions	Working pressure (Psi)
		L (mm)	
125×65	139.7×76.1	85	300
5×2½	5.5×3		
125×80	139.7×88.9	85	
5×3	5.5×3.5		
125×100	139.7×108	85	
5×4	5.5×4.25		
125×100	139.7×114.3	85	
5×4	5.5×4.5		
125×50	141.3×60.3	85	
5×2	5.563×2.375		
125×65	141.3×73	85	
5×2½	5.563×2.875		
125×65	141.3×76.1	85	
5×2½	5.563×3		
125×80	141.3×88.9	85	
5×3	5.563×3.5		
125×100	141.3×114.3	85	
5×4	5.563×4.5		
150×50	159×60.3	85	
6×2	6.25×2.375		
150×65	159×73	85	
6×2½	6.25×2.875		
150×65	159×76.1	85	
6×2½	6.25×3		
150×80	159×88.9	85	
6×3	6.25×3.5		
150×100	159×108	85	
6×4	6.25×4.25		
150×100	159×114.3	85	
6×4	6.25×4.5		
150×125	159×133	85	
6×5	6.25×5.25		
150×125	159×139.7	85	
6×5	6.25×5.5		
150×50	165.1×60.3	85	
6×2	6.5×2.375		
150×65	165.1×73	85	
6×2½	6.5×2.875		
150×65	165.1×76.1	85	
6×2½	6.5×3		
150×80	165.1×88.9	85	
6×3	6.5×3.5		
150×100	165.1×108	85	
6×4	6.5×4.25		
150×100	165.1×114.3	85	
6×4	6.5×4.5		
150×125	165.1×133	85	
6×5	6.5×5.25		
150×125	165.1×139.7	85	
6×5	6.5×5.5		
150×50	168.3×60.3	85	
6×2	6.63×2.375		
150×65	168.3×73	85	
6×2½	6.625×2.875		
150×65	168.3×76.1	85	
6×2½	6.625×2.375		
150×80	168.3×88.9	85	
6×3	6.625×3.5		
150×100	168.3×114.3	85	
6×4	6.625×4.5		
150×125	168.3×139.7	85	
6×5	6.625×5.5		

Grooved Reducer
XGQT07

Nominal Size mm/in	Pipe O.D mm/in	Dimensions	Working pressure (Psi)
		L (mm)	
200×65	219.1×76.1	85	300
8×2½	8.63×3		
200×80	219.1×88.9	85	
8×3	8.625×3.5		
200×100	219.1×108	85	
8×4	8.625×4.25		
200×100	219.1×114.3	85	
8×4	8.625×4.5		
200×125	219.1×139.7	85	
8×5	8.625×5.5		
200×150	219.1×159	85	
8×6	8.625×6.25		
200×150	219.1×165.1	85	
8×6	8.63×6.5		
200×150	219.1×168.3	85	
8×6	8.625×6.63		
250×100	273×108	90	
10×4	10.75×4.25		
250×100	273×114.3	90	
10×4	10.75×4.5		
250×125	273×133	90	
10×5	10.75×5.25		
250×125	273×139.7	90	
10×5	10.75×5.5		
250×150	273×159	90	
10×6	10.75×6.25		
250×150	273×165.1	90	
10×6	10.75×6.5		
250×200	273×219.1	90	
10×8	10.75×8.625		
300×100	323.9×114.3	90	
12×4	12.75×4.5		
300×125	323.9×133	90	
12×5	12.75×5.25		
300×125	323.9×139.7	90	
12×5	12.75×5.5		
300×150	323.9×159	90	
12×6	12.75×6.25		
300×150	323.9×165.1	90	
12×6	12.75×6.625		
300×200	323.9×219.1	90	
12×8	12.75×8.63		
300×250	323.9×273	90	
12×10	12.75×10.75		

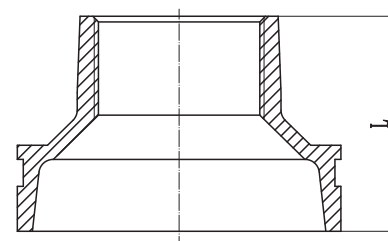
Threaded Reducer XGQT07S



Nominal Size mm/in	Pipe O.D mm/in	Dimensions	Working pressure (Psi)
		L (mm)	
50×25	60.3×33.7	64	230
2×1	2.375×1.327		
50×32	60.3×42.4	64	
2×1¼	2.375×1.669		
50×40	60.3×48.3	64	
2×1½	2.375×1.9		
65×25	73×33.7	64	
2½×1	2.875×1.327		
65×32	73×42.4	64	
2½×1¼	2.875×1.669		
65×40	73×48.3	64	
2½×1½	2.875×1.9		
65×50	73×60.3	64	
2½×2	2.875×2.375		
65×25	76.1×33.7	64	
2½×1	3×1.327		
65×32	76.1×42.4	64	
2½×1¼	3×1.669		
65×40	76.1×48.3	64	
2½×1½	3×1.9		
65×50	76.1×60.3	64	
2½×2	3×2.375		
80×25	88.9×33.7	64	
3×1	3.5×1.327		
80×32	88.9×42.4	64	
3×1¼	3.5×1.669		
80×40	88.9×48.3	64	
3×1½	3.5×1.9		
80×50	88.9×60.3	64	
3×2	3.5×2.375		
80×65	88.9×76.1	64	
3×2½	3.5×3		
100×25	108.0×33.7	76	
4×1	4.25×1.327		
100×32	108.0×42.4	76	
4×1¼	4.25×1.669		
100×40	108.0×48.3	76	
4×1½	4.25×1.9		
100×50	108.0×60.3	76	
4×2	4.25×2.375		
100×65	108.0×76.1	76	
4×2½	4.25×3		
100×80	108×88.9	76	
4×3	4.25×3.5		
100×25	114.3×33.7	76	
4×1	4.5×1.327		
100×32	114.3×42.4	76	
4×1¼	4.5×1.669		
100×40	114.3×48.3	76	
4×1½	4.5×1.9		
100×50	114.3×60.3	76	
4×2	4.5×2.375		
100×65	114.3×76.1	76	
4×2½	4.5×3		
100×80	114.3×88.9	76	
4×3	4.5×3.5		
125×25	133.0×Rc1	85	
5×1	5.25×1.327		
125×32	133.0×42.4	85	
5×1¼	5.25×1.669		
125×40	133.0×48.3	85	
5×1½	5.25×1.9		

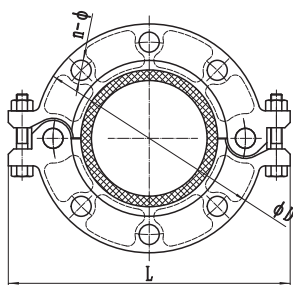
Nominal Size mm/in	Pipe O.D mm/in	Dimensions	Working pressure (Psi)
		L (mm)	
125×50	133.0×60.3	85	230
5×2	5.25×2.375		
125×65	133.0×76.1	85	
5×2½	5.25×3		
125×80	133.0×88.9	85	
5×3	5.25×3.5		
125×25	139.7×33.7	85	
5×1	5.5×1.327		
125×32	139.7×42.4	85	
5×1¼	5.5×1.669		
125×40	139.7×48.3	85	
5×1½	5.5×1.9		
125×50	139.7×60.3	85	
5×2	5.5×2.375		
125×65	139.7×76.1	85	
5×2½	5.5×3		
125×80	139.7×88.9	85	
5×3	5.5×3.5		
125×100	139.7×114.3	85	
5×4	5.5×4.5		
125×25	141.3×33.7	85	
5×1	5.563×1.327		
125×32	141.3×42.4	85	
5×1¼	5.563×1.669		
125×40	141.3×48.3	85	
5×1½	5.563×1.9		
125×50	141.3×60.3	85	
5×2	5.563×2.375		
125×65	141.3×76.1	85	
5×2½	5.563×3		
125×80	141.3×88.9	85	
5×3	5.563×3.5		
125×80	141.3×Rc	85	
5×3	5.563×4.5		
150×25	159×33.7	85	
6×1	6.25×1.327		
150×32	159.0×42.4	85	
6×1¼	6.25×1.669		
150×40	159.0×48.3	85	
6×1½	6.25×1.9		
150×50	159.0×60.3	85	
6×2	6.25×2.375		
150×65	159.0×76.1	85	
6×2½	6.250×3		
150×80	159.0×88.9	85	
6×3	6.25×3.5		
150×100	159.0×114.3	85	
6×4	6.25×4.5		
150×25	165.1×33.7	85	
6×1	6.5×1.327		
150×32	165.1×42.4	85	
6×1¼	6.5×1.669		
150×40	165.1×48.3	85	
6×1½	6.5×1.9		
150×50	165.1×60.3	85	
6×2	6.5×2.375		
150×65	165.1×76.1	85	
6×2½	6.5×3		
150×80	165.1×88.9	85	
6×3	6.5×3.5		
150×100	165.1×114.3	85	
6×4	6.5×4.5		

Threaded Reducer XGQT07S



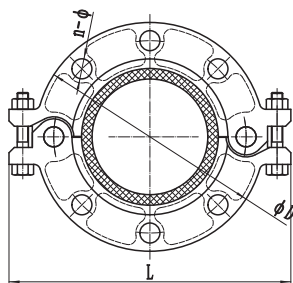
Nominal Size mm/in	Pipe O.D mm/in	Dimensions	Working pressure (Psi)
		L (mm)	
150×25	168.3×33.7	85	230
6×1	6.625×1.327		
150×32	168.3×42.4	85	
6×1¼	6.625×1.669		
150×40	168.3×48.3	85	
6×1½	6.625×1.9		
150×50	168.3×60.3	85	
6×2	6.625×2.375		
150×65	168.3×76.1	85	
6×2½	6.625×3		
150×80	168.3×88.9	85	
6×3	6.625×3.5		
150×100	168.3×114.3	85	
6×4	6.625×4.5		
200×25	219.1×33.7	85	
8×1	8.625×1.327		
200×32	219.1×42.4	85	
8×1¼	8.625×1.669		
200×40	219.1×48.3	85	
8×1½	8.625×1.9		
200×50	219.1×60.3	85	
8×2	8.625×2.375		
200×65	219.1×76.1	85	
8×2½	8.625×3		
200×80	219.1×88.9	85	
8×3	8.625×3.5		
200×100	219.1×114.3	85	
8×4	8.625×4.5		

Grooved Flange PN16 XGQT09



Nominal Size mm/in	Pipe O.D mm/in	Dimensions			Bolt/Nut	Working pressure (Psi)
		D mm	L mm	n-Φ	No.-size (mm)	
50	60.3	164	210	4-18	3/8×2-3/4 (M10×70)	230
2	2.375					
65	73	182	240	8-18		
2½	2.875					
65	76.1	182	240	8-18		
2½	3					
80	88.9	194	250	8-18		
3	3.5					
100	108	216	266	8-18		
4	4.25					
100	114.3	216	266	8-18		
4	4.5					
125	133	247	300	8-18		
5	5.25					
125	139.7	247	300	8-18		
5	5.5					
125	141.3	247	300	8-18		
5	5.563					
150	159	282	336	8-22	1/2×2-3/4 (M12×70)	
6	6.25					
150	165.1	282	336	8-22		
6	6.5					
150	168.3	282	336	8-22		
6	6.625					
200	219.1	335	395	12-22	1/2×3-1/8 (M12×80)	
8	8.625					
250	273	404	470	12-26		
14	10.75					

Grooved Flange ANSI125/150 L991

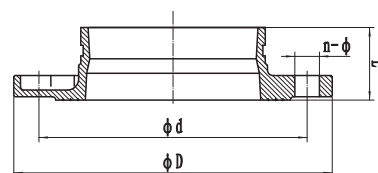


Nominal Size mm/in	Pipe O.D mm/in	Dimensions			Bolt/Nut	Working pressure (Psi)
		D	L	n-Φ	No.-size (mm)	
		mm	mm			
50	60.3	164	210	4-18	3/8×2-1/8 (M10×55)	250
2	2.375					
65	73	176	240	4-18	3/8×2-3/4 (M10×70)	
2½	2.875					
80	88.9	192	250	4-18		
3	3.5					
100	114.3	224	278	8-18		
4	4.5					
125	141.3	254	310	8-22		
5	5.563					
150	168.3	282	336	8-22	1/2×3-1/8 (M12×80)	
6	6.625					
200	219.1	343	395	8-22		
8	8.625					
250	273	362	503	12-26	1/2×4 (M16×100)	
14	10.75					
300	323.9	432	580	12-26		
16	12.75					

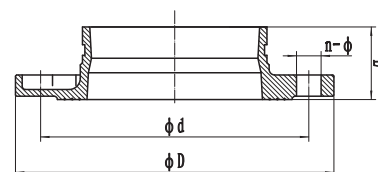
Nominal Size mm/in	Pipe O.D mm/in	Dimensions				Working pressure (Psi)
		ΦD	Φd	H	n-Φ	
		mm	mm	mm	mm	
50	60.30	165	125	60	4-18	230
2	2.38					
65	73.00	185	145	60	4-18	
2½	2.88					
65	76.10	185	145	60	4-18	
2½	3.00					
80	88.90	200	160	60	8-18	
3	3.50					
100	108.00	220	180	60	8-18	
4	4.25					
100	114.30	220	180	60	8-18	
4	4.50					
125	133.00	250	210	65	8-18	
5	5.25					
125	139.70	250	210	65	8-18	
5	5.50					
125	141.30	250	210	65	8-18	
5	5.56					
150	159.00	285	240	65	8-22	
6	6.25					
150	165.10	285	240	65	8-22	
6	6.50					
150	168.30	285	240	65	8-22	
6	6.63					
200	219.10	340	295	70	12-22	
8	8.63					
250	273.00	405	355	72	12-26	
10	10.75					
300	323.90	460	410	72	12-26	
12	12.75					

Nominal Size mm/in	Pipe O.D mm/in	Dimensions (mm)				Working Pressure (psi)
		ΦD	Φd	L	n-Φ	
65	73.00	178	140	75	4-18	250
2½	2.875					
80	88.90	191	153	75	4-18	
3	3.50					
100	114.30	229	191	102	8-18	
4	4.50					
150	168.30	280	241	102	8-22	
6	6.625					

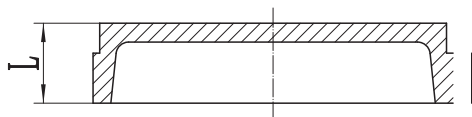
**Flange Adaptor PN16
XGQT08**



**Flange adaptor ANSI125/150
L981**

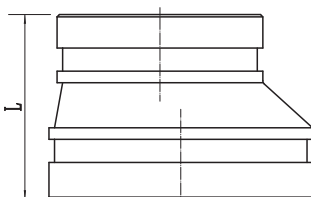


Grooved Cap XGQT06



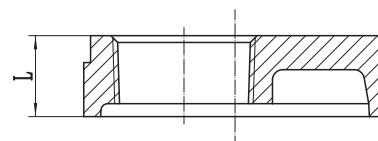
Nominal Size mm/in	Pipe O.D mm/in	Dimensions	Working pressure (Psi)
		L (mm)	
25	33.7	23.8	300
1	1.327		
32	42.4	23.8	
1¼	1.669		
40	48.3	23.8	
1½	1.9		
50	60.3	23.8	
2	2.375		
65	76.1	23.8	
2½	3		
80	88.9	23.8	
3	3.5		
100	108	25.4	
4	4.25		
100	114.3	25.4	
4	4.5		
125	133	25.4	
5	5.25		
125	139.7	25.4	
5	"5.5"		
125	141.3	25.4	
5	5.563		
150	159	25.4	
5	6.25		
150	165.1	25.4	
6	6.5		
150	168.3	25.4	
6	6.625		
200	219.1	32	
8	8.625		
250	273	32	
10	10.75		
300	323.9	32	
12	12.75		

Grooved Eccentric Reducer XGQT072



Nominal Size mm/in	Pipe O.D mm/in	Dimensions	Working pressure (Psi)
		L (mm/in)	
100×80	114.3×88.9	80	300
4×3	4.5×3.5		
125×100	139.7×114.3	102	
5×4	5.5×4.5		
150×100	165.1×114.3	102	
6×4	6.5×4.5		
150×125	165.1×139.7	102	
6×5	6.5×5.5		
200×100	219.1×114.3	127	
8×4	8.625×4.5		
200×150	219.1×165.1	127	
8×6	8.625×6.5		
250×150	273×165.1	152	
10×6	10.75×6.5		
250×200	273×219.1	152	
10×8	10.75×8.625		

Cap with Eccentric hole XGQT061



Nominal Size mm/in	Pipe O.D mm/in	Dimensions	Working pressure (Psi)
		L (mm)	
50×25	60.3×33.7	23.8	300
2×1	2.375×1.327		
50×32	60.3×42.4	23.8	
2×1¼	2.375×1.669		
50×40	60.3×48.3	23.8	
2×1½	2.375×1.9		
65×50	73.0×60.3	23.8	
2½×2	2.875×2.375		
65×25	76.1×33.7	23.8	
2½×1	3×1.327		
65×32	76.1×42.4	23.8	
2½×1¼	3×1.669		
65×40	76.1×48.3	23.8	
2½×1½	3×1.9		
65×50	76.1×60.3	23.8	
2½×2	3×2.375		
80×25	88.9×33.7	23.8	
3×1	3.5×1.327		
80×32	88.9×42.4	23.8	
3×1¼	3.5×1.669		
80×40	88.9×48.3	23.8	
3×1½	3.5×1.9		
80×50	88.9×60.3	23.8	
3×2	3.5×2.375		
100×40	114.3×48.3	25.4	
4×1½	4.5×1.9		
100×50	114.3×60.3	25.4	
4×2	4.5×2.375		
125×50	139.7×60.3	25.4	
5×2	5.5×2.375		
125×50	141.3×60.3	25.4	
5×2	5.563×2.375		
150×50	165.1×60.3	25.4	
6×2	6.5×2.375		
150×40	168.3×48.3	25.4	
6×1½	6.63×1.9		
150×50	168.3×60.3	25.4	
6×2	6.63×2.375		
200×50	219.1×60.3	28	
8×2	8.625×2.375		



SHANDONG LEDE MACHINERY CO., LTD.

ADD: No. 3998, Northern Part of West Outer Ring,
Weifang City, Shandong. P.R. China

TEL/FAX: +86-536-8167992

E-MAIL: wlede@vip.163.com

[Http://www.ledegroun.cn](http://www.ledegroun.cn)